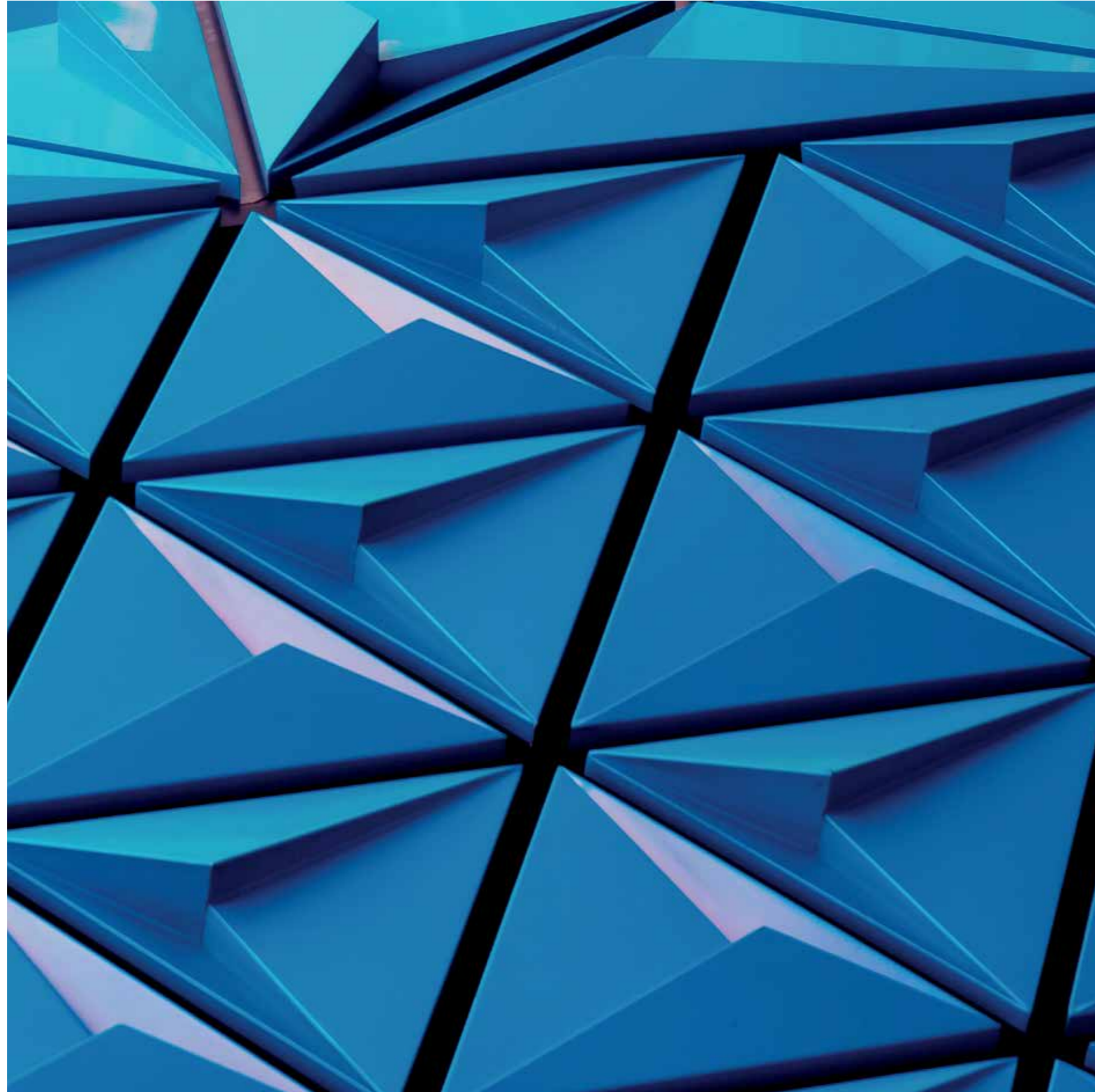




DOWN
TOWN
PORT SAID
RESIDENTIAL & COMMERCIAL

TIME FOR CHANGE

بوسعيد بشكل جديد



EQUITY
REAL ESTATE DEVELOPMENT

A LEAGUE OF OUR OWN

Thriving real estate developer, Equity, launched the notable residential and commercial New Cairo Complex; The Waterway. Building upon this success, Equity introduced two more projects into its portfolio; The Capitalway, and The Waterway North Coast. Renowned for their distinctive layouts, landscaping, and water features, Equity's projects are exceptional and unparalleled. Their distinctively modern architecture and world class finishing make their projects second to none.

REDEFINING
REAL ESTATE

إكوتي هي إحدى شركات التطوير العقاري المزدهرة والتي قامت بإنشاء المجمع السكني المتميز The Waterway آخرين ضمن سجل إنجازاتها وهما: The Waterway North و The CapitalWay و Coast. تتميز مشروعات شركة إكوتي بوجودها خارج دائرة المنافسة بفضل تمتعها بأساليب معمارية عصرية وتشطيبات فائقة الجودة.

PICTURE-PERFECT PORT SAID

A vibrant and diverse city sits on the Mediterranean coast at the mouth of the Suez Canal. Located across two continents, Port Said has for centuries been a center for global trade and multiculturalism. The iconic Corniche, lined with stunning architecture, captures the attention and imagination of the city's visitors. Filled to the brim with historical landmarks such as the Port Said Lighthouse, Egypt's third largest city is truly a unique gem. Rich with culture and potential, Port Said embraces the past while looking towards the future.

بور سعيد الساحرة

تحتل المركز الثالث من حيث الضخامة بين سائر المدن المصرية فهي تعد جوهرة متفردة بغناها الثقافي وإمكاناتها الواعدة، حيث تجمع بين التاريخ العريق والتطلع للمستقبل، كما تعد مركز حيوي للاستيراد والتصدير من وإلى مختلف الدول، وإلى الآن تحتفظ بصورتها المتميزة التي يتصدرها مبنى هيئة قناة السويس الأثري ولا زالت معالمها القديمة تدهش الزائرين مثل الفناء الأثري وتمثال دليسبس.





DISCOVER DOWNTOWN PORT SAID

Our newest development, Downtown Port Said, is scheduled to launch within the wide Mediterranean city, aiming to revolutionize the local residential and commercial sectors. The first of its kind project is being developed with the notion of bringing a sense of modernization to this diverse seaside city. With the introduction of Downtown Port Said, the city is facing a change. Through this dramatic revival, a new life will begin.

اكتشف «داون تاون» بور سعيد

يهدف مشروع «DOWNTOWN PORT SAID» لإحداث نقلة نوعية في كل من الإنشاءات السكنية والتجارية، إذ يعد المشروع ككل أسلوب حياة جديد سوف تشهده مدينة بورسعيد، كما ستصبح وجهة جاذبة للكثيرين الباحثين عن أسلوب حياة عصري مليء بالخدمات والأنشطة والترفيه داخل مكان واحد.

CREATE THE CITY'S FUTURE

Inspired by a desire to create a modern and transformative social hub in Port Said, the name "Downtown" resonates with both potential and aspiration, signifying a new future for the city. Through applying modern specifications and innovative designs to a wide range of different residential properties, whatever a family requires, they'll be able to discover their perfect home here. Just as Downtown Cairo brings together the biggest international retail brands, the liveliest cafes and the widest variety of cultural experiences, Downtown Port Said, complete with its unique commercial strip and residential properties, will uphold its name and become the new heart of the city.

نحو غد مشرق

لقد استوحينا اسم DOWNTOWN من أسلوب الحياة الذي سنراه داخل الكمباوند، والذي سيصبح ملتقى التجمع الجديد والذي سيجلب الكثيرين، فالمشروع نفسه كامل متكامل، حيث يضم وحدات سكنية وتجارية بمواصفات متميزة، إضافة لقائمة متسعة من المطاعم والمقاهي والملاعب الرياضية. أعطينا أهمية للمساحات الخضراء وبالطبع وفرنا أعلى مواصفات التأمين والحراسة والخصوصية للمشروع ككل.



PORT SAID
INTERNATIONAL AIRPORT
مطار بورسعيد الدولي

DOWN
TOWN
PORT SAID
RESIDENTIAL & COMMERCIAL



KEYPLAN

 AIRPORT
مطار

 PORT
ميناء

 MARITIME CLUB
النادي البحري

 MONUMENT
نصب تذكاري

 MUSEUM
متحف

2 HRS 30 MINS FROM CAIRO
ساعتين و نصف من القاهرة

1 HR FROM DAMIETTA
ساعة من دمياط

2 HRS 45 MINS FROM SUEZ
ساعتين و خمسة و أربعون
دقيقة من السويس

1 HR 15 MINS FROM ISMAILIA
ساعة و خمسة عشر
دقائق من الإسماعيلية

CULTURAL CENTER
6 MINS AWAY FROM DOWNTOWN
المركز الثقافي الترفيهي، ٦ دقائق من داون تاون

PORT SAID INTERNATIONAL AIRPORT
11 MINS AWAY FROM DOWNTOWN
مطار بورسعيد الدولي، ١١ دقيقة من داون تاون

AL MASRY CLUB STADIUM
3 MINS AWAY FROM DOWNTOWN
ستاد النادي المصري، ٣ دقائق من داون تاون

SAAD ZAGHLOUL ST.
شارع سعد زغلول

DAMIETTA-MANSOURA
NEW BUS STATION
محطة أتوبيس
دمياط - المتصورة

MUSLIM CEMETERY
مقابر المسلمين

SAAD ZAGHLOUL ST.
شارع سعد زغلول

ARMED FORCES CLUB
نادي القوات المسلحة

AL MASRY CLUB STADIUM
ستاد النادي المصري

23RD JULY ST.
شارع ٢٣ يوليو

MOHAMMED FARID
BEK ST.
شارع محمد فريد بك

PORT SAID CLUB
نادي بورسعيد

23RD JULY ST.
شارع ٢٣ يوليو

PORT SAID
MILITARY MUSEUM
متحف بور سعيد الحربي

PORT SAID
RAILWAY STATION
محطة السكة الحديد
بيورسعيد

MANSHIAH
SQUARE
ميدان المنشية

COMMERCIAL
PORT SHIPYARD
ميناء السفن
التجارية

SIMON ARZT
BUILDING
مبنى سيمون
ارزت

FERDINAND DE
LESSEPS MONUMENT
قاعدة تمثال فرديناند
ديليسبس

SHOOTING CLUB
نادي الصيد

TARH EL BAHR ST.
شارع طرح البحر

EL NASR ST.
شارع النصر

AL IMARAT ST.
شارع الإمارات

PORT FOUAD
بور فؤاد

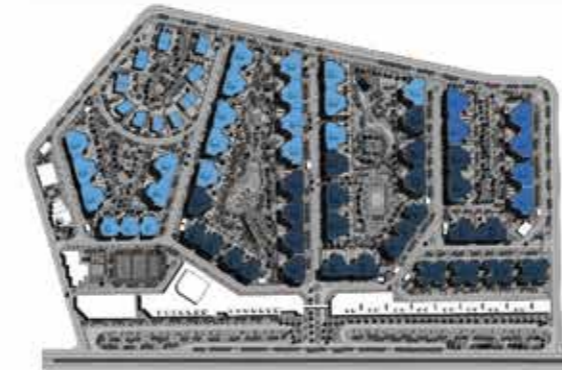
SALAM
MARITIME CLUB
نادي السلام البحري

MASTER PLAN CONCEPT

As Port Said's first development to combine residential and luxury commercial elements, Downtown Port Said's residents will have unparalleled access to everything they need and more to live a flourishing lifestyle. With every unit enjoying exquisite landscape and pool views, families are immersed in the beauty of the compound, while also being able to make the most of the broad range of state-of-the-art retail and recreational facilities on offer.

تخطيط سابق لعصره

لأن إرضاء عملائنا هو أول أولوياتنا، فقد جعلنا جميع الملاك يتمتعون برؤية المساحات الخضراء وحمامات السباحة مما يبعث على الراحة النفسية لملاك الوحدات أينما أطلوا بأعينهم. كما قمنا ببناء المنشآت التجارية والترفيهية والنادي الاجتماعي، لخدمة جميع ساكني الكومباوند.



- GROUND FLOOR + ONE LEVEL
- GROUND FLOOR + THREE LEVELS
- GROUND FLOOR + FOUR LEVELS

KEYPLAN

- | | |
|-------------------------|-------------------------|
| 1 RESIDENTIAL BUILDINGS | 2 RESIDENTIAL VILLAS |
| 3 SHOPPING MALL | 4 HYPER MARKET |
| 5 ENTERTAINMENT PARK | 6 SOCIAL CLUBHOUSE |
| 7 MOSQUE | 8 SWIMMING POOL |
| 9 PLAYGROUNDS | 10 PRE-SCHOOL & NURSERY |



ARCHITECTURAL CONCEPT

Occupying 40 acres of land, Downtown Port Said has been conceptualized with the clients' varying needs in mind. Aiming to provide maximum comfort, Downtown Port Said offers a vast range of different property types including Stand-Alone Villas, Twin Villas, and Apartments, each featuring spacious and accommodating living quarters with world-class standard finishing that meets the highest modern specifications.

فكر معماري رائد

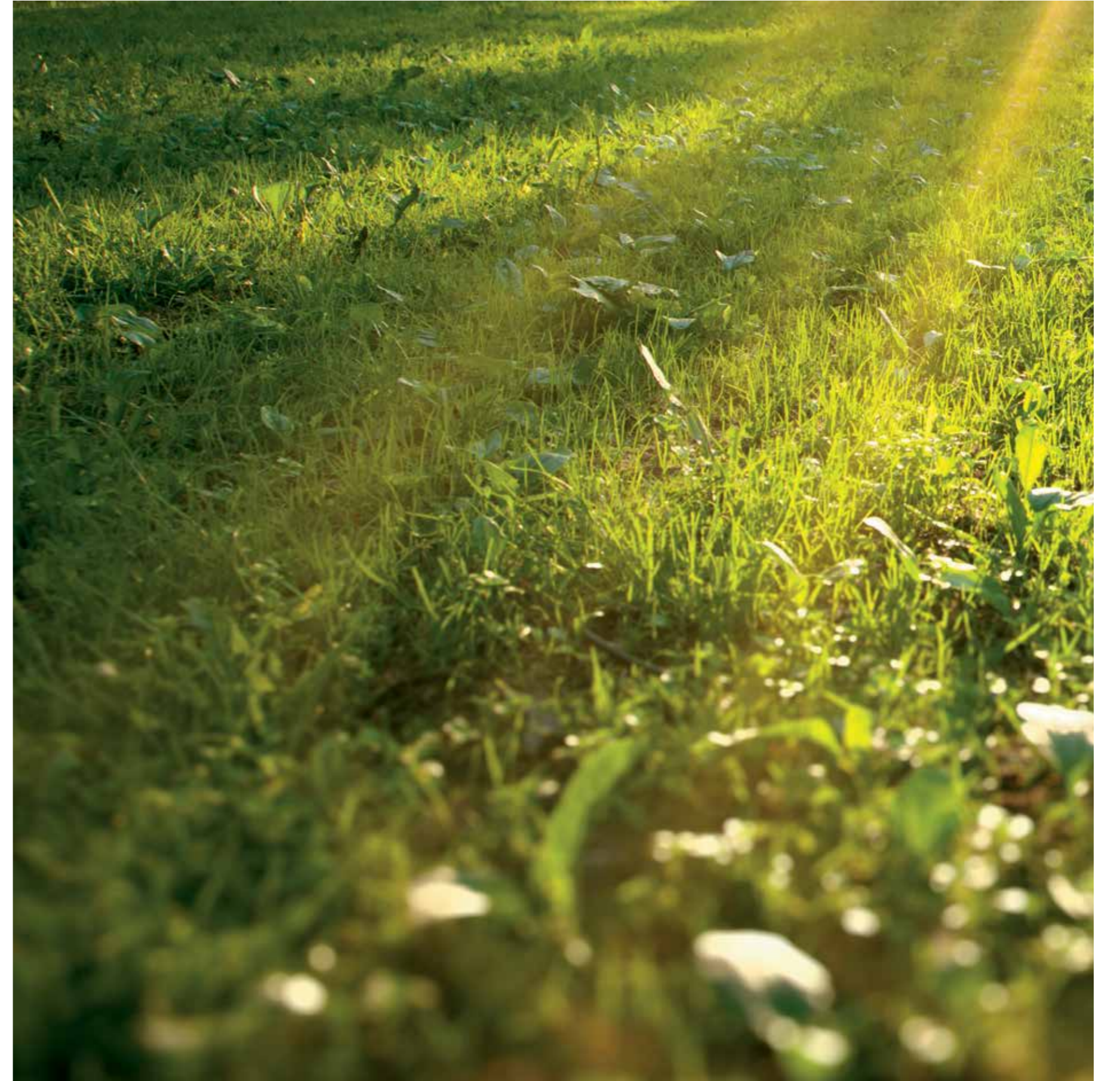
نظراً لتنوع الأذواق، فقد حرصنا على تقديم أكبر تنوع من خيارات الوحدات التي تمتد على مساحة ٤٠ فدان كالفيلات المستقلة أو الفيلات التوأمين أو الشقق السكنية، ليجد كل عميل ما يناسب احتياجاته. أما من حيث التشطيبات فقد حرصنا على أن تتمتع بالجودة والاستمرارية والعمر الطويل.

LANDSCAPE CONCEPT

A striking morning view where families are able to truly appreciate the intricate landscape design from dawn until dusk. You and your neighbors will enjoy exclusive access to this secluded and private urban space, ensuring the upmost safety for the whole family.

الطبيعة الساحرة

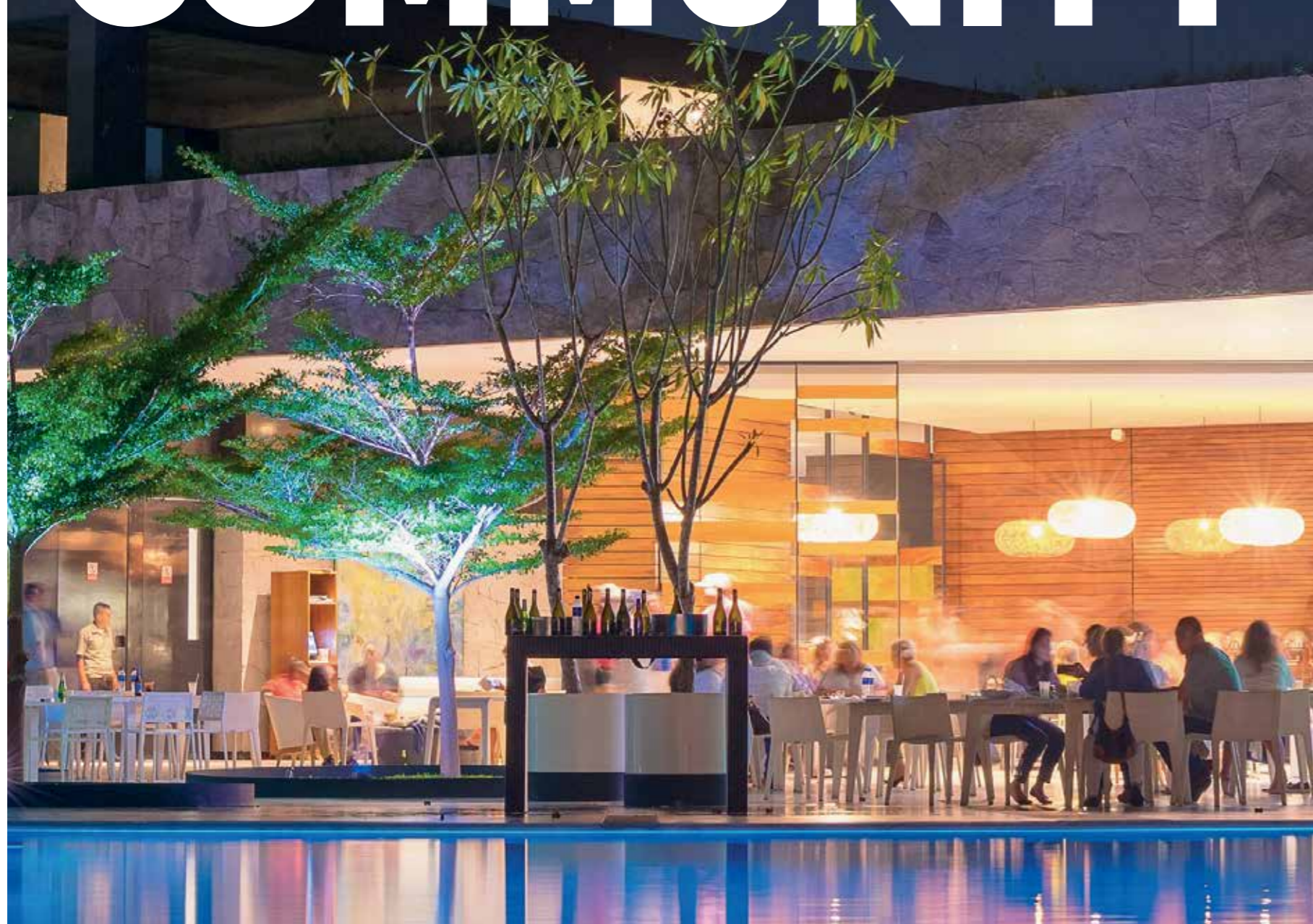
من أجل أن نحقق أعلى درجات الجمال والترفيه لملاك الوحدات، قمنا بتصميم وتنفيذ مسطح أخضر يعد قطعة فنية مستقلة بذاتها، سوف تدهش كل من يمر بها، سواء ساكنين أو زائرين.



EXPLORE OUR AMENITIES

الترفيه كما لم تعهده من قبل

SHINING COMMUNITY



SOCIAL CLUBHOUSE

The perfect location for families to gather and for friends to socialize, enjoy the sunshine, and take part in a wide range of sporting activities.

النادي الإجتماعي

يهدف النادي الإجتماعي لاجتذاب كافة أفراد العائلة بالكمباوند ، ولهذا فهو يضم حمام سباحة وأنشطة رياضية وإجتماعية عديدة، إضافة لعدة مطاعم كي نرضي كافة الأذواق.



SWIMMING POOL

Conveniently dotted around the compound, with one located within the social Clubhouse itself, our five swimming pools offer the perfect spots to relax and refresh.

حمامات السباحة

يمكن لملاك الوحدات التمتع بالسباحة أو حتى مجرد الجلوس والاسترخاء من خلال طريقتين، إما حمام السباحة التابع للنادي الاجتماعي أو مجموعة حمامات السباحة الموزعة داخل الكمبوند.

RELAX, REFRESH





PLAY, COMPETE



PLAYGROUND

Our playgrounds provide the whole family with everything that they need to live an active and athletic lifestyle in a fun and stimulating way. Complete with top-quality sporting equipment, tennis courts and a football pitch, you'll be able to enjoy all of your favorite activities here.

الملاعب

كي نجعل سكان الكمباوند يتمتعون بالنشاط والحيوية أنشأنا ملاعب رياضية لكل من رياضتي كرة القدم والتنس.

PORTSAID'S FIRST COMMERCIAL STRIP

الممشى التجاري... متعة التسوق



DISCOVER DINING

RESTAURANTS AND CAFES

Discover this new hotspot for experiencing cuisines from all over the world with our extensive variety of restaurants and cafes. Whether you are looking for a romantic evening, a family meal, or even just a coffee to take away, you'll find it here.

المطاعم والمقاهي

لأننا نحترم ثقافة الاختلاف، فقد صممنا منطقة المطاعم بحيث تصبح الملتقى المفضل لدى سكان الكمباوند ومكان تجمع الأهل والأصحاب، فهي تضم العديد من المطاعم المتنوعة لترضي كافة أذواق سكان الكمباوند، سواء كانوا يبحثون عن أجواء رومانسية أو تجمع عائلي أو حتى مجرد كوب من القهوة السريعة.

HYPER MARKET

A one-of-a-kind, all-inclusive superstore offering everything that you need to keep you and your family satisfied.

هايبر ماركت

لكي تصبح عملية التسوق أسرع وأكثر سلاسة ويسر، سوف يتواجد بداخل منتجع DOWNTOWN أول هايبر ماركت من نوعه، بخلاف وسائل الترفيه كي يصبح يوم التسوق فيه كل ما يرضي جميع أفراد العائلة بمنتهى السهولة.





SHOP IN STYLE

SHOPPING MALL

Introducing brands for the first time in Port Said, catering to all your shopping and social needs. Drawing in people from all over the region, this modern and expansive mall is set to become the city's ultimate shopping destination.

مركز التسوق

إنها الوجهة الجديدة التي ستجذب كل عشاق التسوق إليها، فلأول مرة ستشهد مدينة بورسعيد مول تجاري بهذه الضخامة والذي يقدم عدد هائل من العلامات التجارية في مختلف التخصصات.

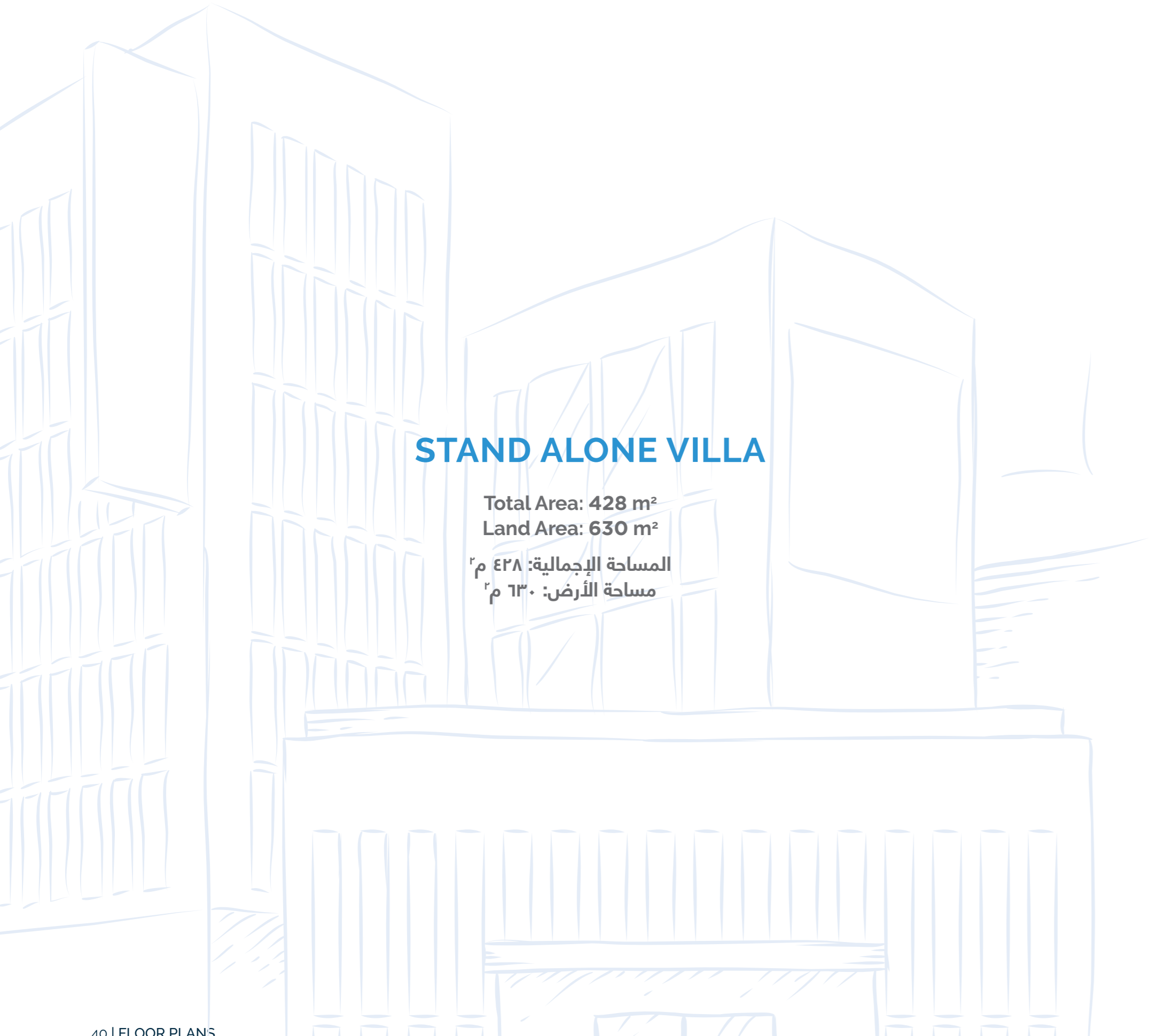
SELECT YOUR PERFECT HOME

أكثر من مجرد مساحة

STAND ALONE VILLA

Disclaimer: 1. All rooms dimensions are measured to structural elements and exclude wall finished and constructions tolerances. 2. All dimensions have been provided by our consultant architects. 3. All materials, dimensions and drawings are approximate and information is subject to change without notice. 4. Actual area may vary from the stated area. 5. Drawing areas not to scale. 6. The developer reserves the right to make revisions. 7. Actual unit areas, front windows, porches, terraces, loggia and exterior trim detail may vary by elevation styles. 8. The unit orientation will be shown in the parcel layout and not as show in the floor plans.





STAND ALONE VILLA

Total Area: 428 m²
Land Area: 630 m²

المساحة الإجمالية: ٤٢٨ م^٢
مساحة الأرض: ٦٣٠ م^٢

STAND ALONE - 428m² VILLA | GROUND FLOOR



BUILT UP AREA 210 m²

GARDEN AREA 420 m²

FLOOR COMPONENTS

1. ENTRANCE	4.60 x 3.60 m
2. OFFICE	4.10 x 3.20 m
3. TOILET	1.50 x 2.70 m
4. ELEVATOR	2.00 x 1.80 m
5. RECEPTION & DINING	9.20 x 12.00 m
6. TERRACE	6.90 x 2.00 m
7. MAID'S ROOM	2.10 x 2.70 m
8. MAID'S TOILET	1.20 x 1.40 m
9. KITCHEN	4.60 x 4.30 m

Disclaimer: 1. All rooms dimensions are measured to structural elements and exclude wall finished and constructions tolerances. 2. All dimensions have been provided by our consultant architects. 3. All materials, dimensions and drawings are approximate and information is subject to change without notice. 4. Actual area may vary from the stated area. 5. Drawing areas not to scale. 6. The developer reserves the right to make revisions. 7. Actual unit areas, front windows, porches, terraces, loggia and exterior trim detail may vary by elevation styles. 8. The unit orientation will be shown in the parcel layout and not as show in the floor plans.

STAND ALONE - 428m² VILLA | FIRST FLOOR



BUILT UP AREA 218 m²

FLOOR COMPONENTS

1. LIVING ROOM	7.75 x 4.20 m
2. TERRACE 1	5.15 x 2.15 m
3. MASTER BEDROOM	5.70 x 4.25 m
4. DRESSING ROOM	2.00 x 2.90 m
5. MASTER BATHROOM	2.85 x 2.30 m
6. MASTER BATHROOM 2	2.85 x 2.35 m
7. MASTER BEDROOM 2	4.90 x 4.30 m
8. TERRACE 2	3.95 x 1.00 m
9. BEDROOM 1	4.80 x 3.70 m
10. BEDROOM 2	4.00 x 3.90 m
11. BATHROOM	2.30 x 2.65 m
12. ELEVATOR	2.00 x 1.80 m



Disclaimer: 1. All rooms dimensions are measured to structural elements and exclude wall finished and constructions tolerances. 2. All dimensions have been provided by our consultant architects. 3. All materials, dimensions and drawings are approximate and information is subject to change without notice. 4. Actual area may vary from the stated area. 5. Drawing areas not to scale. 6. The developer reserves the right to make revisions. 7. Actual unit areas, front windows, porches, terraces, loggia and exterior trim detail may vary by elevation styles. 8. The unit orientation will be shown in the parcel layout and not as show in the floor plans.

TWIN VILLA

Disclaimer: 1. All rooms dimensions are measured to structural elements and exclude wall finished and constructions tolerances. 2. All dimensions have been provided by our consultant architects. 3. All materials, dimensions and drawings are approximate and information is subject to change without notice. 4. Actual area may vary from the stated area. 5. Drawing areas not to scale. 6. The developer reserves the right to make revisions. 7. Actual unit areas, front windows, porches, terraces, loggia and exterior trim detail may vary by elevation styles. 8. The unit orientation will be shown in the parcel layout and not as show in the floor plans.



TWIN VILLA - 320m² | GROUND FLOOR



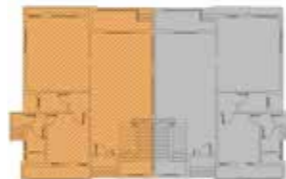
BUILT UP AREA 156 m²

GARDEN AREA 132 m²

FLOOR COMPONENTS

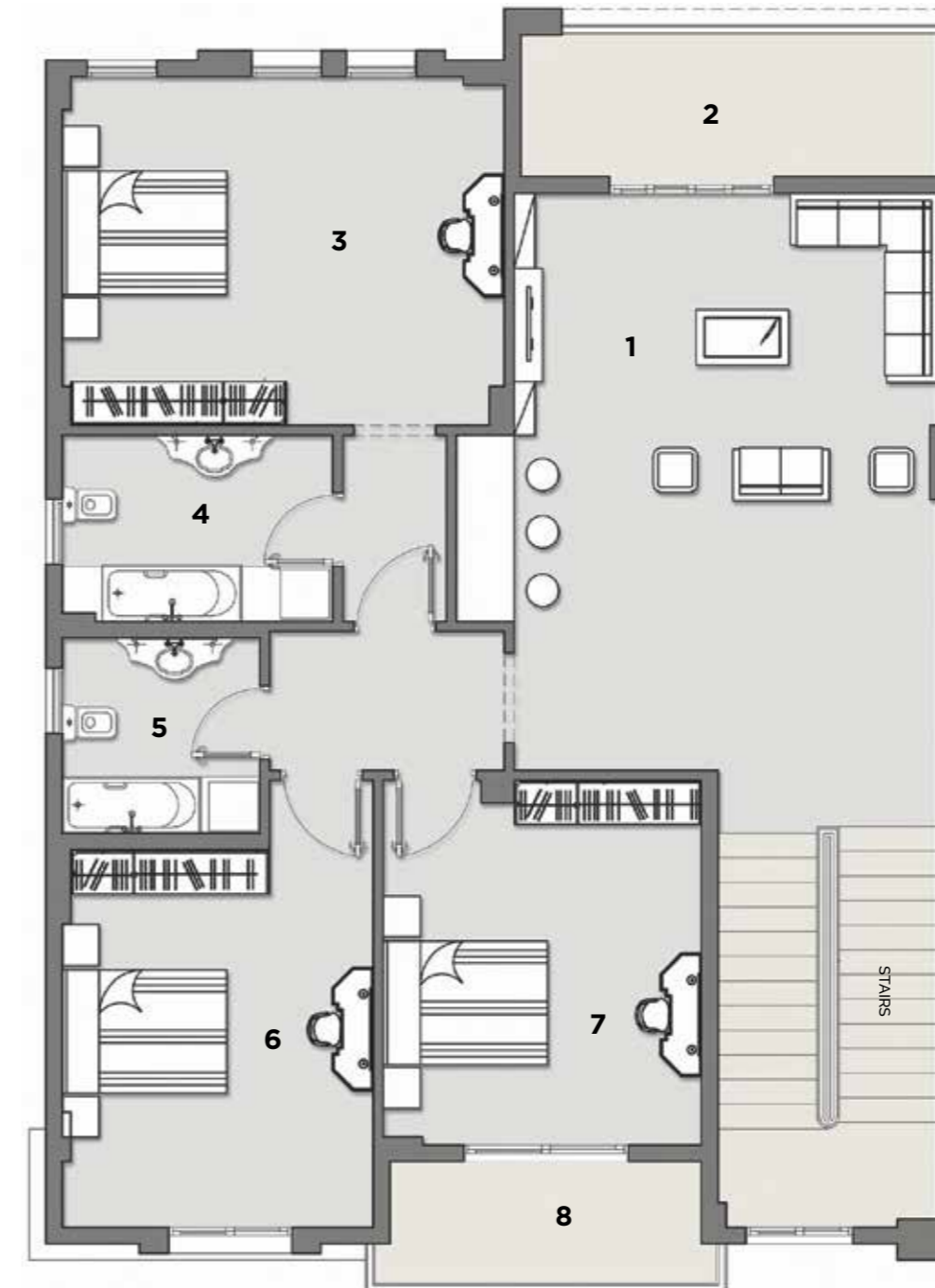
1. LIVING ROOM	7.65 x 5.15 m
2. TERRACE	3.90 x 1.75 m
3. RECEPTION & DINING	6.70 x 5.30 m
4. TOILET	2.30 x 1.60 m
5. KITCHEN	4.40 x 3.60 m
6. MAID'S ROOM	2.10 x 1.60 m
7. MAID'S TOILET	0.90 x 1.60 m

KEY PLAN



Disclaimer: 1. All rooms dimensions are measured to structural elements and exclude wall finished and constructions tolerances. 2. All dimensions have been provided by our consultant architects. 3. All materials, dimensions and drawings are approximate and information is subject to change without notice. 4. Actual area may vary from the stated area. 5. Drawing areas not to scale. 6. The developer reserves the right to make revisions. 7. Actual unit areas, front windows, porches, terraces, loggia and exterior trim detail may vary by elevation styles. 8. The unit orientation will be shown in the parcel layout and not as show in the floor plans.

TWIN VILLA - 320m² | FIRST FLOOR



BUILT UP AREA 164 m²

FLOOR COMPONENTS

1. LIVING ROOM	7.00 x 5.15 m
2. TERRACE 1	5.00 x 1.75 m
3. MASTER BEDROOM	4.20 x 5.30 m
4. MASTER BATHROOM	2.30 x 3.25 m
5. BATHROOM	2.20 x 2.50 m
6. BEDROOM 1	3.80 x 4.50 m
7. BEDROOM 2	4.40 x 3.80 m
8. TERRACE 2	3.70 x 0.90 m

KEY PLAN



Disclaimer: 1. All rooms dimensions are measured to structural elements and exclude wall finished and constructions tolerances. 2. All dimensions have been provided by our consultant architects. 3. All materials, dimensions and drawings are approximate and information is subject to change without notice. 4. Actual area may vary from the stated area. 5. Drawing areas not to scale. 6. The developer reserves the right to make revisions. 7. Actual unit areas, front windows, porches, terraces, loggia and exterior trim detail may vary by elevation styles. 8. The unit orientation will be shown in the parcel layout and not as show in the floor plans.

TWIN VILLA - 320m² | GROUND FLOOR



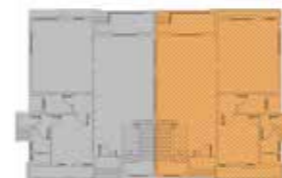
BUILT UP AREA 156 m²

GARDEN AREA 132 m²

FLOOR COMPONENTS

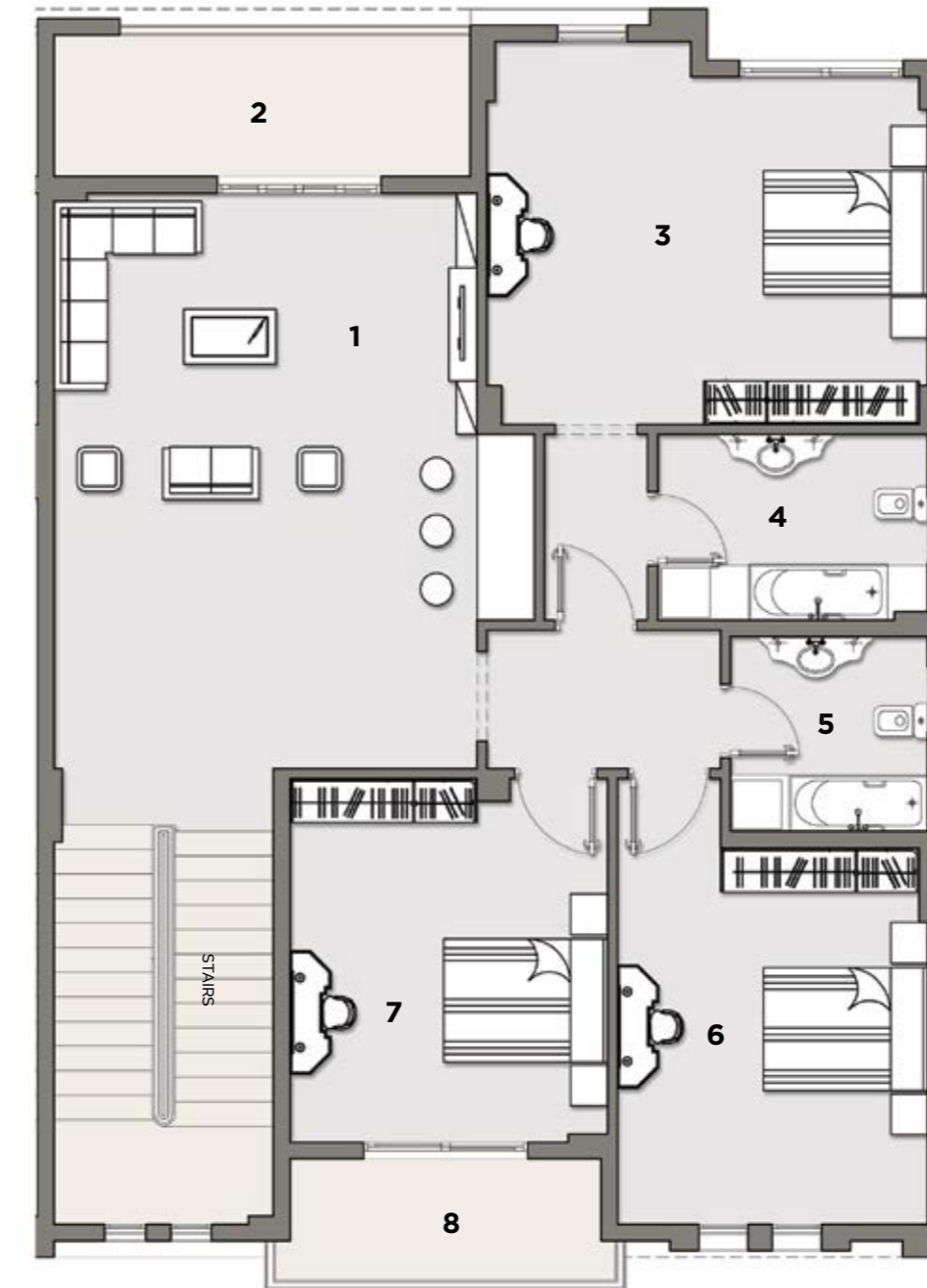
1. RECEPTION	7.65 x 5.15 m
2. TERRACE	3.90 x 1.75 m
3. RECEPTION & DINING	6.70 x 5.30 m
4. TOILET	2.30 x 1.60 m
5. KITCHEN	4.40 x 3.60 m
6. MAID'S ROOM	2.10 x 1.60 m
7. MAID'S TOILET	0.90 x 1.60 m

KEY PLAN



Disclaimer: 1. All rooms dimensions are measured to structural elements and exclude wall finished and constructions tolerances. 2. All dimensions have been provided by our consultant architects. 3. All materials, dimensions and drawings are approximate and information is subject to change without notice. 4. Actual area may vary from the stated area. 5. Drawing areas not to scale. 6. The developer reserves the right to make revisions. 7. Actual unit areas, front windows, porches, terraces, loggia and exterior trim detail may vary by elevation styles. 8. The unit orientation will be shown in the parcel layout and not as show in the floor plans.

TWIN VILLA - 320m² | FIRST FLOOR



BUILT UP AREA 164 m²

FLOOR COMPONENTS

1. LIVING ROOM	7.00 x 5.15 m
2. TERRACE 1	5.00 x 1.75 m
3. MASTER BEDROOM	4.20 x 5.30 m
4. MASTER BATHROOM	2.30 x 3.25 m
5. BATHROOM	2.20 x 2.50 m
6. BEDROOM	3.80 x 4.50 m
7. BEDROOM 2	4.40 x 3.80 m
8. TERRACE 2	3.70 x 0.90 m

KEY PLAN

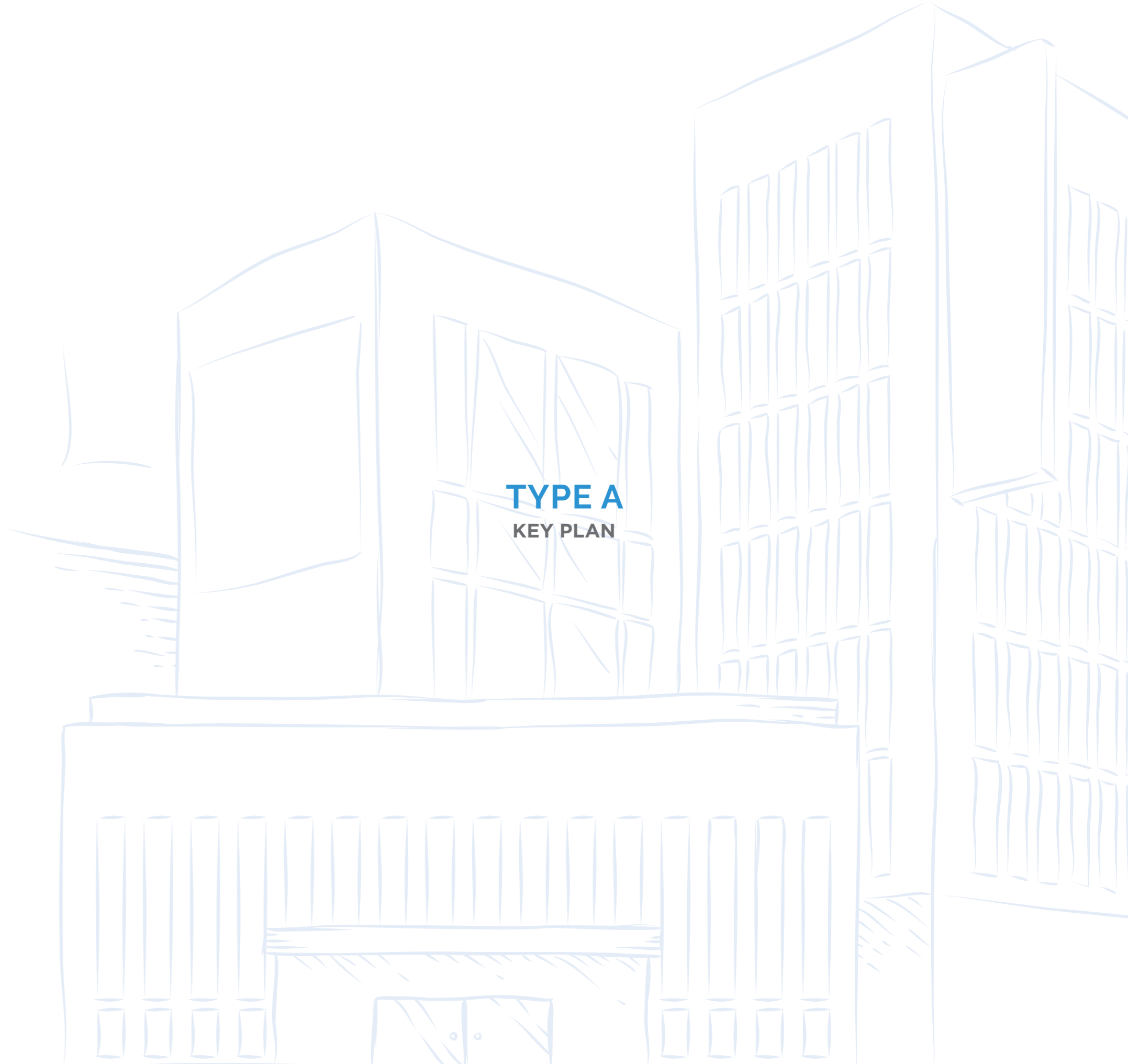
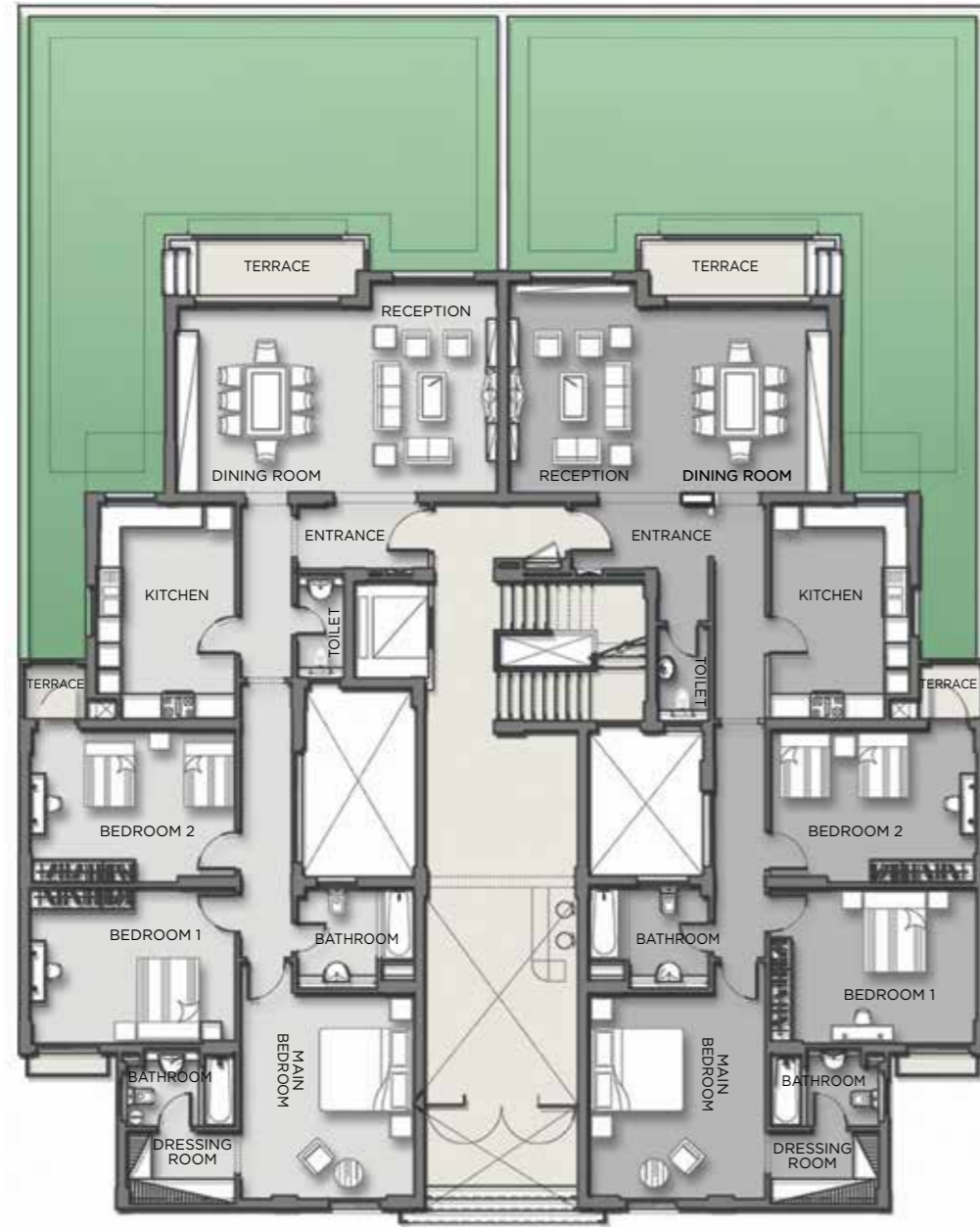


Disclaimer: 1. All rooms dimensions are measured to structural elements and exclude wall finished and constructions tolerances. 2. All dimensions have been provided by our consultant architects. 3. All materials, dimensions and drawings are approximate and information is subject to change without notice. 4. Actual area may vary from the stated area. 5. Drawing areas not to scale. 6. The developer reserves the right to make revisions. 7. Actual unit areas, front windows, porches, terraces, loggia and exterior trim detail may vary by elevation styles. 8. The unit orientation will be shown in the parcel layout and not as show in the floor plans.

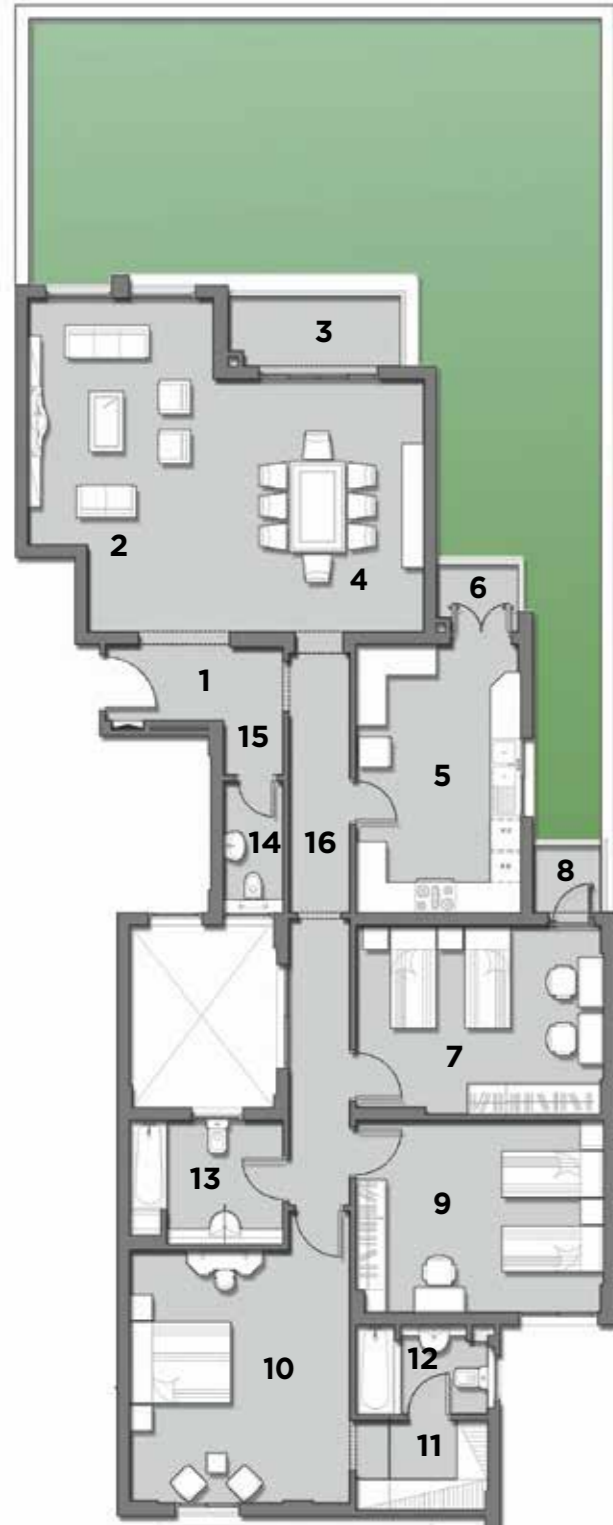
TYPE A

Disclaimer: 1. All rooms dimensions are measured to structural elements and exclude wall finished and constructions tolerances. 2. All dimensions have been provided by our consultant architects. 3. All materials, dimensions and drawings are approximate and information is subject to change without notice. 4. Actual area may vary from the stated area. 5. Drawing areas not to scale. 6. The developer reserves the right to make revisions. 7. Actual unit areas, front windows, porches, terraces, loggia and exterior trim detail may vary by elevation styles. 8. The unit orientation will be shown in the parcel layout and not as show in the floor plans.





TYPE A APT.1 + GARDEN | GROUND FLOOR



BUILT UP AREA 235 m²

GARDEN AREA 80 m²

APARTMENT COMPONENTS

1. ENTRANCE	3.10 x 1.50 m
2. RECEPTION	6.60 x 3.65 m
3. TERRACE 1	3.50 x 1.50 m
4. DINING ROOM	4.15 x 5.00 m
5. KITCHEN	5.30 x 3.25 m
6. TERRACE 2	1.70 x 1.45 m
7. BEDROOM 1	3.70 x 5.00 m
8. TERRACE 3	1.45 x 1.45 m
9. BEDROOM 2	3.80 x 5.00 m
10. MASTER BEDROOM	4.30 x 5.00 m
11. DRESSING ROOM	2.65 x 1.75 m
12. MASTER BATHROOM	2.75 x 1.90 m
13. BATHROOM	2.85 x 1.35 m
14. TOILET	1.15 x 2.60 m
15. CORRIDOR	1.15 x 1.10 m
16. CORRIDOR	1.25 x 10.95 m

KEY PLAN



Disclaimer: 1. All rooms dimensions are measured to structural elements and exclude wall finished and constructions tolerances. 2. All dimensions have been provided by our consultant architects. 3. All materials, dimensions and drawings are approximate and information is subject to change without notice. 4. Actual area may vary from the stated area. 5. Drawing areas not to scale. 6. The developer reserves the right to make revisions. 7. Actual unit areas, front windows, porches, terraces, loggia and exterior trim detail may vary by elevation styles. 8. The unit orientation will be shown in the parcel layout and not as show in the floor plans.

TYPE A APT.1 | FIRST FLOOR



BUILT UP AREA 240 m²

APARTMENT COMPONENTS

1. ENTRANCE	3.10 x 1.50 m
2. RECEPTION	5.15 x 3.10 m
3. TERRACE 1	4.70 x 1.35 m
4. DINING ROOM	4.15 x 5.00 m
5. KITCHEN	3.30 x 5.25 m
6. TERRACE 2	1.50 x 1.35 m
7. BEDROOM 1	3.70 x 5.00 m
8. TERRACE 3	1.45 x 1.45 m
9. BEDROOM 2	3.80 x 5.00 m
10. MASTER BEDROOM	4.30 x 5.00 m
11. DRESSING ROOM	2.65 x 1.75 m
12. MASTER BATHROOM	2.75 x 1.90 m
13. BATHROOM	2.85 x 1.35 m
14. TOILET	1.15 x 2.55 m
15. CORRIDOR	1.15 x 1.10 m
16. CORRIDOR	1.15 x 11.00 m

KEY PLAN



Disclaimer: 1. All rooms dimensions are measured to structural elements and exclude wall finished and constructions tolerances. 2. All dimensions have been provided by our consultant architects. 3. All materials, dimensions and drawings are approximate and information is subject to change without notice. 4. Actual area may vary from the stated area. 5. Drawing areas not to scale. 6. The developer reserves the right to make revisions. 7. Actual unit areas, front windows, porches, terraces, loggia and exterior trim detail may vary by elevation styles. 8. The unit orientation will be shown in the parcel layout and not as show in the floor plans.

TYPE A APT.1 | 2nd, 3rd & 4th FLOOR



BUILT UP AREA 260 m²

APARTMENT COMPONENTS

1. ENTRANCE	3.10 x 1.15 m
2. RECEPTION	5.15 x 3.10 m
3. TERRACE 1	4.70 x 1.35 m
4. DINING ROOM	4.15 x 5.00 m
5. TERRACE 2	1.60 x 1.20 m
6. LIVING ROOM	5.30 x 4.50 m
7. KITCHEN	3.60 x 4.85 m
8. TERRACE 3	1.45 x 1.45 m
9. BEDROOM	3.80 x 4.85 m
10. BEDROOM 2	3.90 x 3.80 m
11. MASTER BEDROOM	5.65 x 5.00 m
12. DRESSING ROOM	2.25 x 2.35 m
13. MASTER BATHROOM	1.75 x 3.55 m
14. BATHROOM	2.45 x 2.55 m
15. TOILET	1.15 x 2.55 m
16. CORRIDOR	1.15 x 11.00 m

KEY PLAN



Disclaimer: 1. All rooms dimensions are measured to structural elements and exclude wall finished and constructions tolerances. 2. All dimensions have been provided by our consultant architects. 3. All materials, dimensions and drawings are approximate and information is subject to change without notice. 4. Actual area may vary from the stated area. 5. Drawing areas not to scale. 6. The developer reserves the right to make revisions. 7. Actual unit areas, front windows, porches, terraces, loggia and exterior trim detail may vary by elevation styles. 8. The unit orientation will be shown in the parcel layout and not as show in the floor plans.

TYPE A APT.2 + GARDEN | GROUND FLOOR



BUILT UP AREA 227 m²

GARDEN AREA 80 m²

APARTMENT COMPONENTS

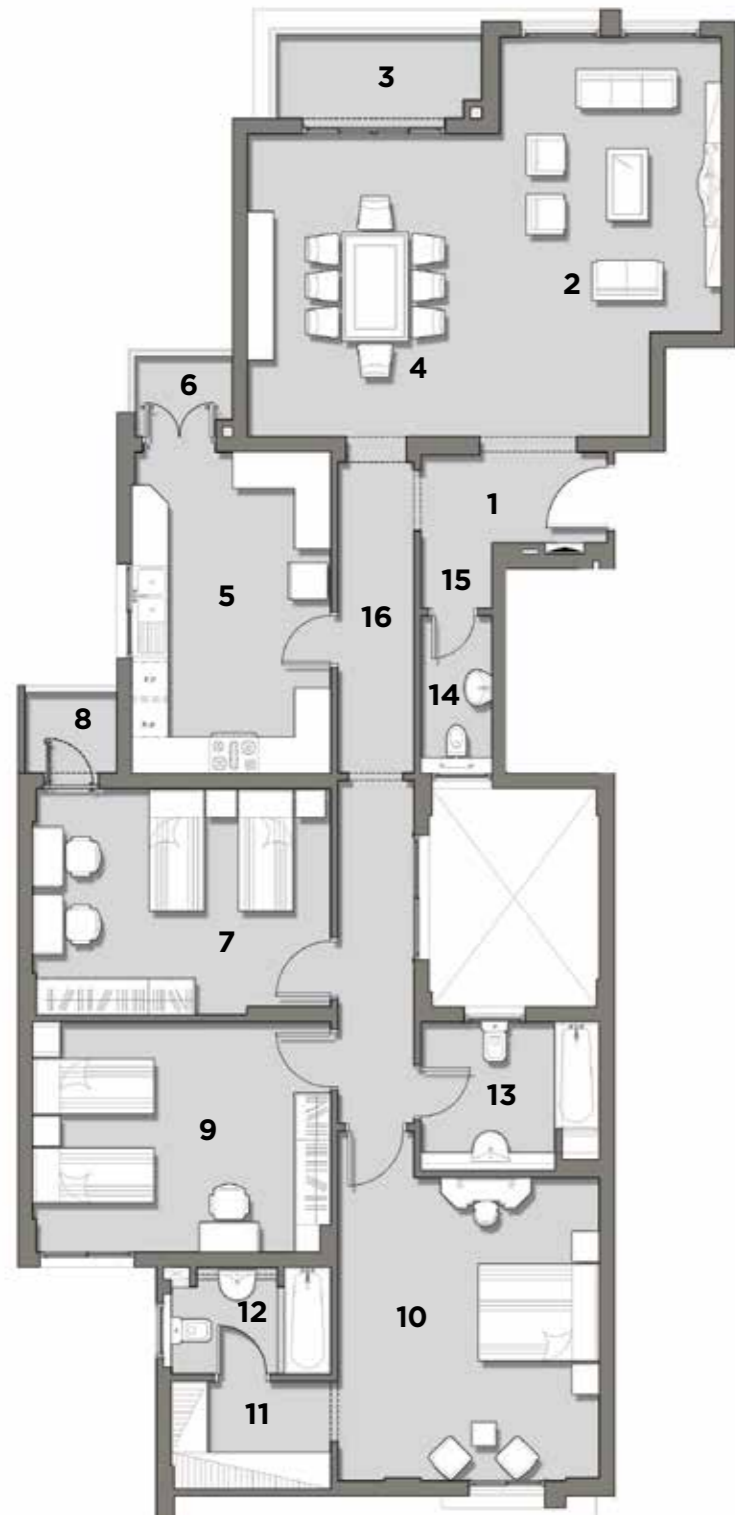
1. ENTRANCE	3.10 x 1.50 m
2. RECEPTION	5.15 x 3.10 m
3. TERRACE 1	1.50 x 1.35 m
4. DINING ROOM	4.15 x 5.00 m
5. KITCHEN	4.00 x 3.25 m
6. TERRACE 2	4.70 x 1.35 m
7. BEDROOM	3.70 x 5.00 m
8. TERRACE 3	1.45 x 1.45 m
9. BEDROOM 2	3.80 x 5.00 m
10. MASTER BEDROOM	4.30 x 5.00 m
11. DRESSING ROOM	2.65 x 1.75 m
12. MASTER BATHROOM	2.75 x 1.90 m
13. BATHROOM 2	2.85 x 1.35 m
14. TOILET	1.15 x 2.55 m
15. CORRIDOR	1.25 x 10.95 m

KEY PLAN



Disclaimer: 1. All rooms dimensions are measured to structural elements and exclude wall finished and constructions tolerances. 2. All dimensions have been provided by our consultant architects. 3. All materials, dimensions and drawings are approximate and information is subject to change without notice. 4. Actual area may vary from the stated area. 5. Drawing areas not to scale. 6. The developer reserves the right to make revisions. 7. Actual unit areas, front windows, porches, terraces, loggia and exterior trim detail may vary by elevation styles. 8. The unit orientation will be shown in the parcel layout and not as show in the floor plans.

TYPE A APT.2 | FIRST FLOOR



BUILT UP AREA 240 m²

APARTMENT COMPONENTS

1. ENTRANCE	3.10 x 1.50 m
2. RECEPTION	5.15 x 3.10 m
3. TERRACE 1	4.70 x 1.35 m
4. DINING ROOM	4.15 x 5.00 m
5. KITCHEN	3.30 x 5.25 m
6. TERRACE 2	1.50 x 1.35 m
7. BEDROOM 1	3.70 x 5.00 m
8. TERRACE 3	1.45 x 1.45 m
9. BEDROOM 2	3.80 x 5.00 m
10. MASTER BEDROOM	4.30 x 5.00 m
11. DRESSING ROOM	2.65 x 1.75 m
12. MASTER BATHROOM	2.75 x 1.90 m
13. BATHROOM	2.85 x 1.35 m
14. TOILET	1.15 x 2.55 m
15. CORRIDOR	1.15 x 1.10 m
16. CORRIDOR	1.25 x 11.00 m

KEY PLAN



Disclaimer: 1. All rooms dimensions are measured to structural elements and exclude wall finished and constructions tolerances. 2. All dimensions have been provided by our consultant architects. 3. All materials, dimensions and drawings are approximate and information is subject to change without notice. 4. Actual area may vary from the stated area. 5. Drawing areas not to scale. 6. The developer reserves the right to make revisions. 7. Actual unit areas, front windows, porches, terraces, loggia and exterior trim detail may vary by elevation styles. 8. The unit orientation will be shown in the parcel layout and not as show in the floor plans.

TYPE A APT.2 | 2nd, 3rd & 4th FLOOR



BUILT UP AREA 260 m²

APARTMENT COMPONENTS

1. ENTRANCE	3.10 x 3.35 m
2. RECEPTION	5.15 x 3.10 m
3. TERRACE 1	4.70 x 1.35 m
4. DINING ROOM	4.15 x 5.00 m
5. TERRACE 2	1.60 x 1.20 m
6. LIVING ROOM	5.30 x 4.60 m
7. KITCHEN	3.60 x 4.85 m
8. TERRACE 3	1.45 x 1.45 m
9. BEDROOM 1	3.80 x 4.85 m
10. BEDROOM 2	3.90 x 3.80 m
11. MASTER BEDROOM	5.65 x 5.00 m
12. DRESSING ROOM	2.25 x 2.35 m
13. MASTER BATHROOM	1.75 x 3.55 m
14. BATHROOM	2.45 x 2.55 m
15. TOILET	1.15 x 2.55 m
16. CORRIDOR	1.15 x 1.10 m

KEY PLAN

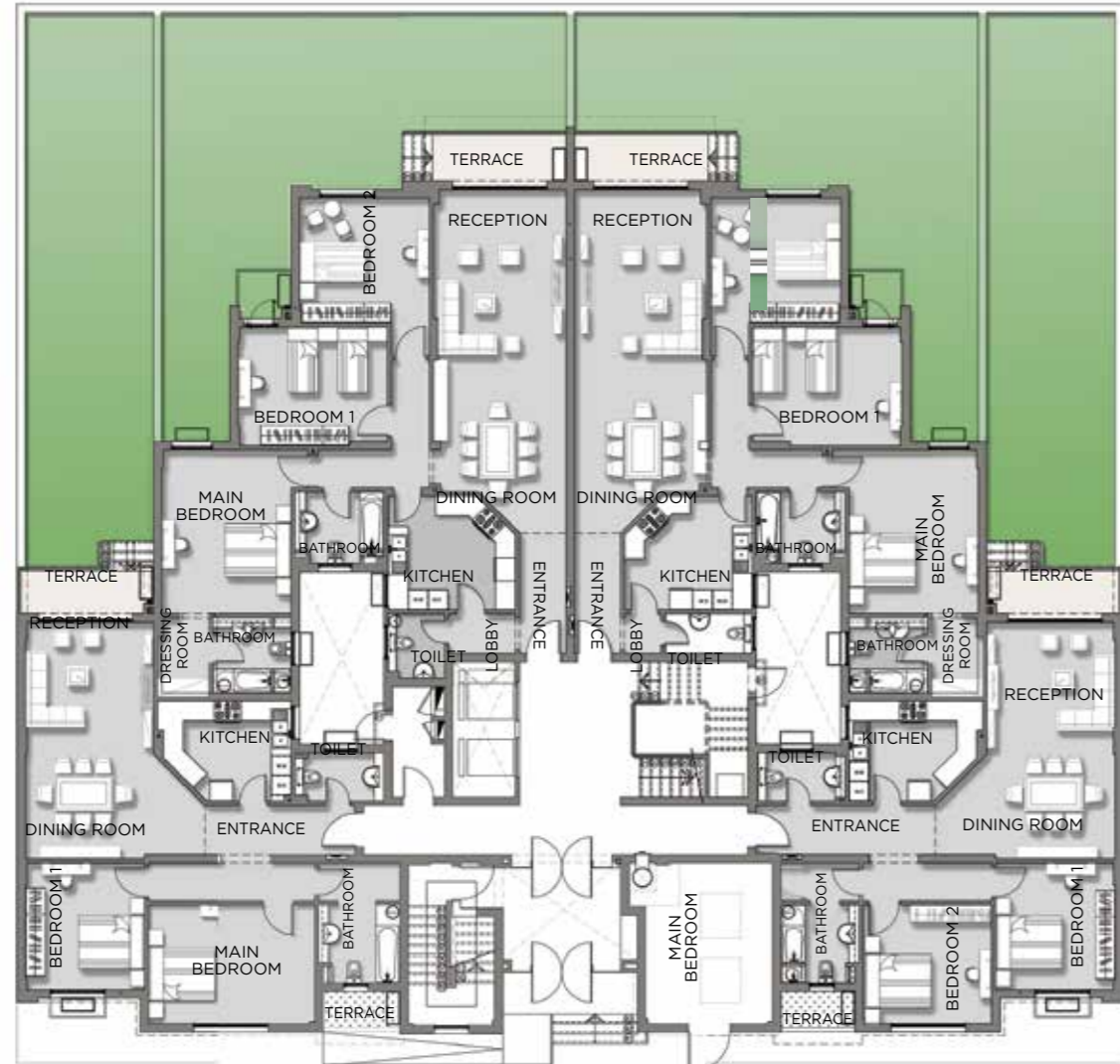


Disclaimer: 1. All rooms dimensions are measured to structural elements and exclude wall finished and constructions tolerances. 2. All dimensions have been provided by our consultant architects. 3. All materials, dimensions and drawings are approximate and information is subject to change without notice. 4. Actual area may vary from the stated area. 5. Drawing areas not to scale. 6. The developer reserves the right to make revisions. 7. Actual unit areas, front windows, porches, terraces, loggia and exterior trim detail may vary by elevation styles. 8. The unit orientation will be shown in the parcel layout and not as show in the floor plans.

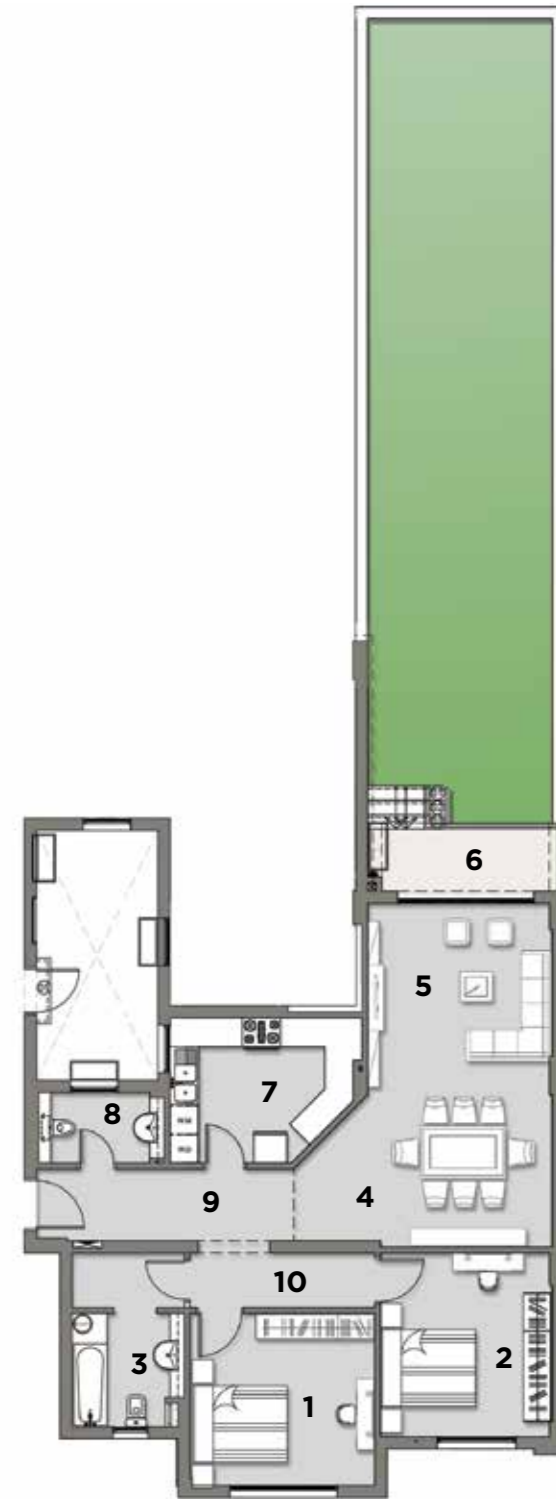
TYPE B

Disclaimer: 1. All rooms dimensions are measured to structural elements and exclude wall finished and constructions tolerances. 2. All dimensions have been provided by our consultant architects. 3. All materials, dimensions and drawings are approximate and information is subject to change without notice. 4. Actual area may vary from the stated area. 5. Drawing areas not to scale. 6. The developer reserves the right to make revisions. 7. Actual unit areas, front windows, porches, terraces, loggia and exterior trim detail may vary by elevation styles. 8. The unit orientation will be shown in the parcel layout and not as show in the floor plans.





TYPE B APT.1 + GARDEN | GROUND FLOOR



BUILT UP AREA 135 m²

GARDEN AREA 65 m²

APARTMENT COMPONENTS

1. BEDROOM 1	3.85 x 3.60 m
2. BEDROOM 2	3.85 x 3.60 m
3. BATHROOM	2.20 x 2.35 m
4. DINING ROOM	5.40 x 3.15 m
5. RECEPTION	3.85 x 4.00 m
6. TERRACE	4.00 x 1.40 m
7. KITCHEN	3.00 x 4.00 m
8. TOILET	2.60 x 1.45 m
9. ENTRANCE	1.50 x 4.55 m
10. CORRIDOR	1.15 x 5.00 m

KEY PLAN



Disclaimer: 1. All rooms dimensions are measured to structural elements and exclude wall finished and constructions tolerances. 2. All dimensions have been provided by our consultant architects. 3. All materials, dimensions and drawings are approximate and information is subject to change without notice. 4. Actual area may vary from the stated area. 5. Drawing areas not to scale. 6. The developer reserves the right to make revisions. 7. Actual unit areas, front windows, porches, terraces, loggia and exterior trim detail may vary by elevation styles. 8. The unit orientation will be shown in the parcel layout and not as show in the floor plans.

TYPE B APT.1 - TYPICAL FLOORS | 1st, 2nd, 3rd & 4th FLOOR



BUILT UP AREA 173 m²

APARTMENT COMPONENTS

1. BEDROOM 1	4.90 x 4.00 m
2. TERRACE 1	2.25 x 1.25 m
3. BATHROOM	2.40 x 2.35 m
4. BEDROOM 2	3.90 x 3.60 m
5. BEDROOM 3	3.85 x 3.60 m
6. DINING ROOM	5.45 x 3.90 m
7. RECEPTION	3.30 x 3.90 m
8. TERRACE 2	3.60 x 1.40 m
9. KITCHEN	3.00 x 4.00 m
10. TOILET	2.65 x 1.50 m
11. ENTRANCE	1.50 x 4.55 m
12. CORRIDOR	1.15 x 5.00 m

KEY PLAN



Disclaimer: 1. All rooms dimensions are measured to structural elements and exclude wall finished and constructions tolerances. 2. All dimensions have been provided by our consultant architects. 3. All materials, dimensions and drawings are approximate and information is subject to change without notice. 4. Actual area may vary from the stated area. 5. Drawing areas not to scale. 6. The developer reserves the right to make revisions. 7. Actual unit areas, front windows, porches, terraces, loggia and exterior trim detail may vary by elevation styles. 8. The unit orientation will be shown in the parcel layout and not as show in the floor plans.

TYPE B APT.2 + GARDEN | GROUND FLOOR



BUILT UP AREA 200 m²

GARDEN AREA 80 m²

APARTMENT COMPONENTS

1. DINING ROOM	4.00 x 4.90 m
2. RECEPTION	4.00 x 4.25 m
3. TERRACE	4.95 x 1.55 m
4. BEDROOM 1	3.80 x 3.90 m
5. BEDROOM 2	3.60 x 4.50 m
6. MASTER BEDROOM	5.00 x 3.90 m
7. DRESSING ROOM	2.40 x 1.55 m
8. MASTER BATHROOM	2.30 x 2.35 m
9. BATHROOM	2.70 x 2.20 m
10. KITCHEN	3.45 x 3.85 m
11. TOILET	1.70 x 1.95 m
12. CORRIDOR	1.15 x 2.75 m
13. CORRIDOR	1.15 x 3.40 m
14. ENTRANCE	4.90 x 1.40 m
15. LOBBY	1.20 x 2.00 m

KEY PLAN



Disclaimer: 1. All rooms dimensions are measured to structural elements and exclude wall finished and constructions tolerances. 2. All dimensions have been provided by our consultant architects. 3. All materials, dimensions and drawings are approximate and information is subject to change without notice. 4. Actual area may vary from the stated area. 5. Drawing areas not to scale. 6. The developer reserves the right to make revisions. 7. Actual unit areas, front windows, porches, terraces, loggia and exterior trim detail may vary by elevation styles. 8. The unit orientation will be shown in the parcel layout and not as show in the floor plans.

TYPE B APT.2 - TYPICAL FLOORS | 1st, 2nd, 3rd & 4th FLOOR



BUILT UP AREA 200 m²

APARTMENT COMPONENTS

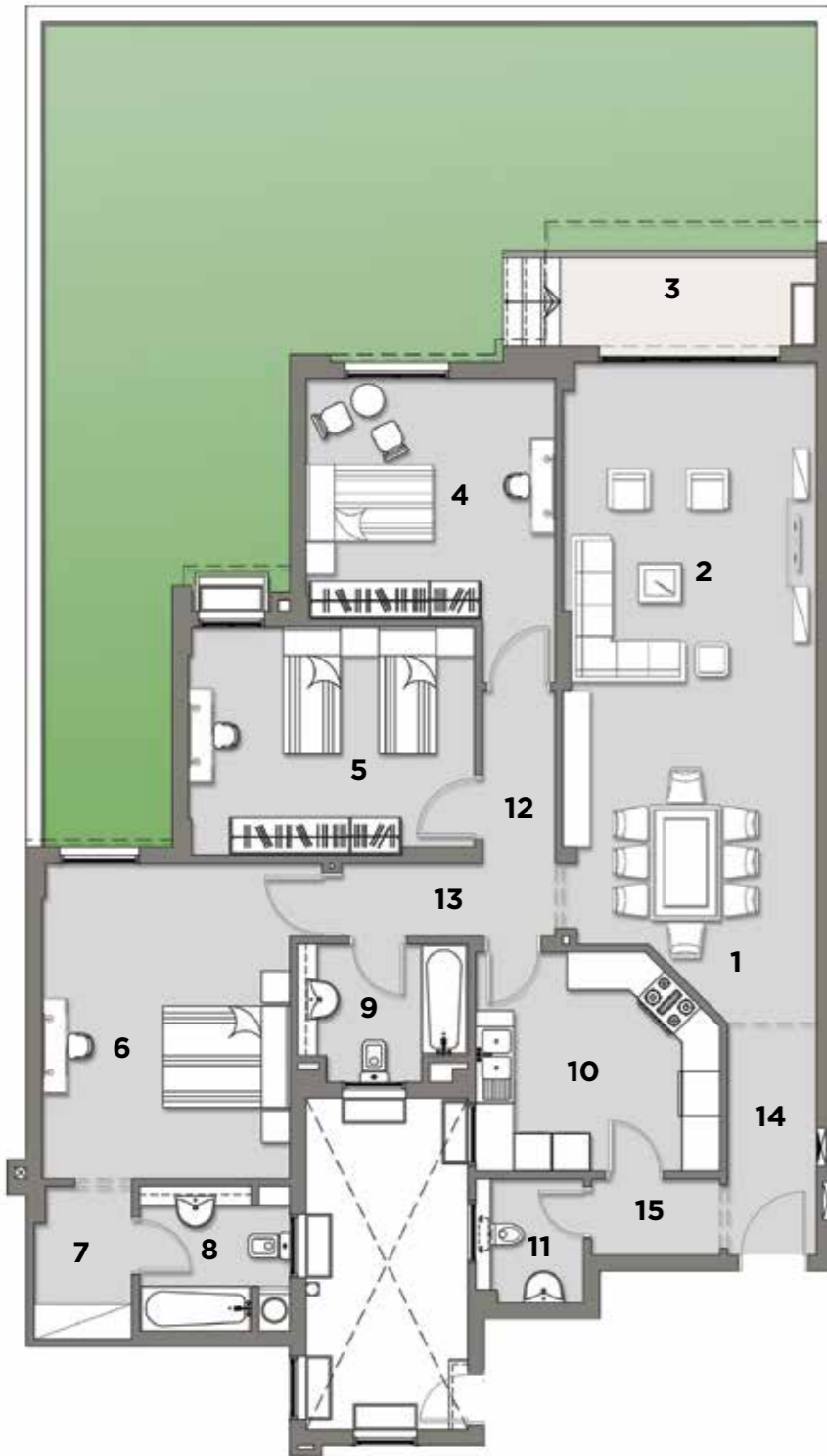
1. DINING ROOM	4.00 x 4.90 m
2. RECEPTION	4.00 x 4.25 m
3. TERRACE 1	3.85 x 1.70 m
4. BEDROOM 1	3.80 x 3.90 m
5. BEDROOM 2	3.60 x 4.50 m
6. TERRACE 2	1.55 x 1.40 m
7. MASTER BEDROOM	5.00 x 3.90 m
8. DRESSING ROOM	2.40 x 1.55 m
9. MASTER BATHROOM	2.30 x 2.35 m
10. BATHROOM	2.70 x 2.20 m
11. KITCHEN	3.45 x 3.85 m
12. TOILET	1.20 x 2.65 m
13. CORRIDOR	1.15 x 2.75 m
14. CORRIDOR	1.15 x 3.40 m
15. ENTRANCE	4.90 x 1.40 m
16. LOBBY	1.20 x 2.00 m

KEY PLAN



Disclaimer: 1. All rooms dimensions are measured to structural elements and exclude wall finished and constructions tolerances. 2. All dimensions have been provided by our consultant architects. 3. All materials, dimensions and drawings are approximate and information is subject to change without notice. 4. Actual area may vary from the stated area. 5. Drawing areas not to scale. 6. The developer reserves the right to make revisions. 7. Actual unit areas, front windows, porches, terraces, loggia and exterior trim detail may vary by elevation styles. 8. The unit orientation will be shown in the parcel layout and not as show in the floor plans.

TYPE B APT.3 + GARDEN | GROUND FLOOR



BUILT UP AREA 200 m²

GARDEN AREA 80 m²

APARTMENT COMPONENTS

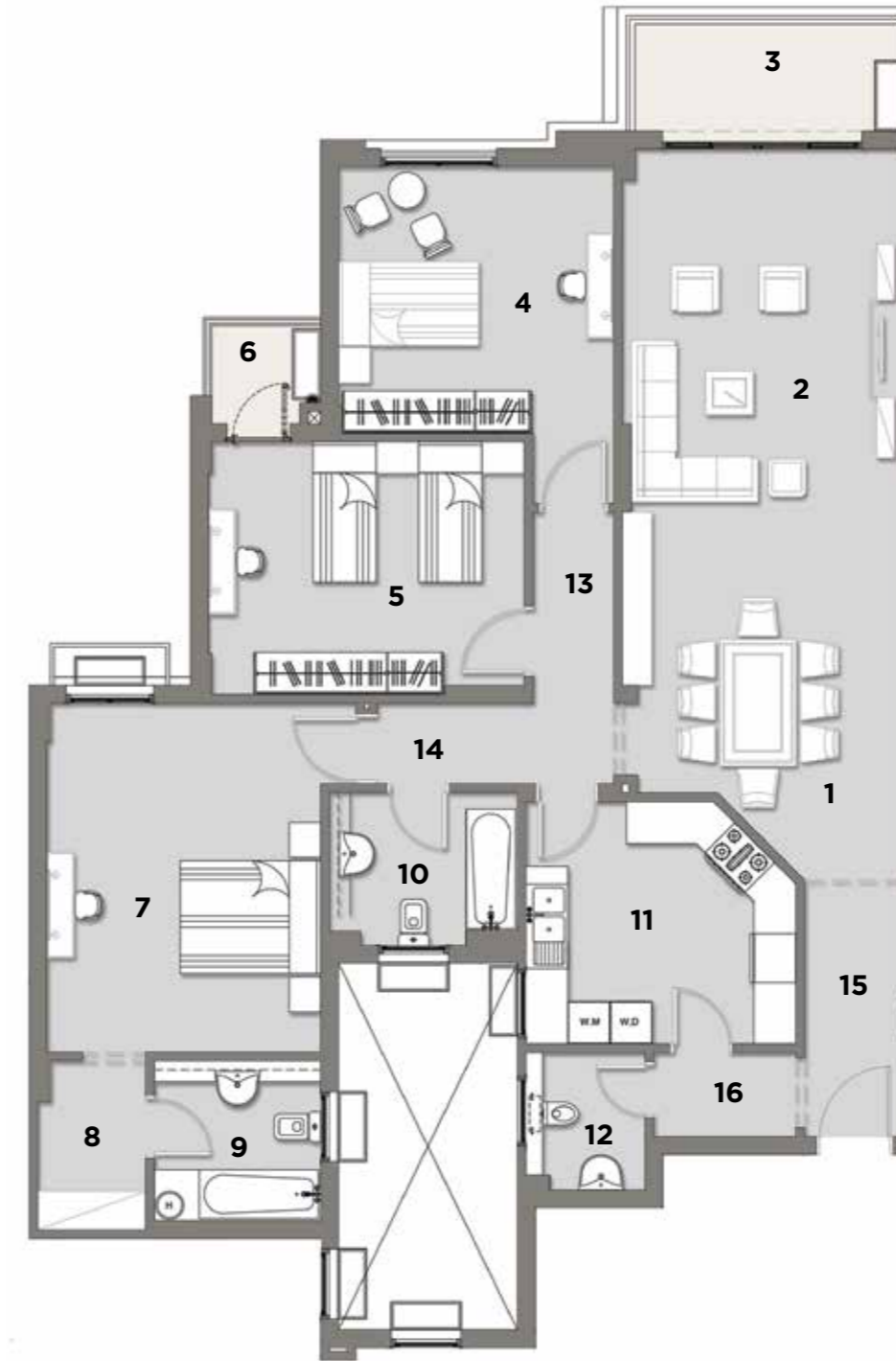
1. DINING ROOM	4.00 x 4.90 m
2. RECEPTION	4.00 x 4.25 m
3. TERRACE	4.95 x 1.55 m
4. BEDROOM 1	3.80 x 3.90 m
5. BEDROOM 2	3.60 x 4.50 m
6. MASTER BEDROOM	5.00 x 3.90 m
7. DRESSING ROOM	2.40 x 1.55 m
8. MASTER BATHROOM	2.30 x 2.35 m
9. BATHROOM	2.70 x 2.20 m
10. KITCHEN	3.45 x 3.85 m
11. TOILET	1.70 x 1.95 m
12. CORRIDOR	1.15 x 2.75 m
13. CORRIDOR	1.15 x 3.40 m
14. ENTRANCE	4.90 x 1.40 m
15. LOBBY	1.20 x 2.00 m

KEY PLAN



Disclaimer: 1. All rooms dimensions are measured to structural elements and exclude wall finished and constructions tolerances. 2. All dimensions have been provided by our consultant architects. 3. All materials, dimensions and drawings are approximate and information is subject to change without notice. 4. Actual area may vary from the stated area. 5. Drawing areas not to scale. 6. The developer reserves the right to make revisions. 7. Actual unit areas, front windows, porches, terraces, loggia and exterior trim detail may vary by elevation styles. 8. The unit orientation will be shown in the parcel layout and not as show in the floor plans.

TYPE B APT.3 - TYPICAL FLOORS | 1st, 2nd, 3rd & 4th FLOOR



BUILT UP AREA 200 m²

APARTMENT COMPONENTS

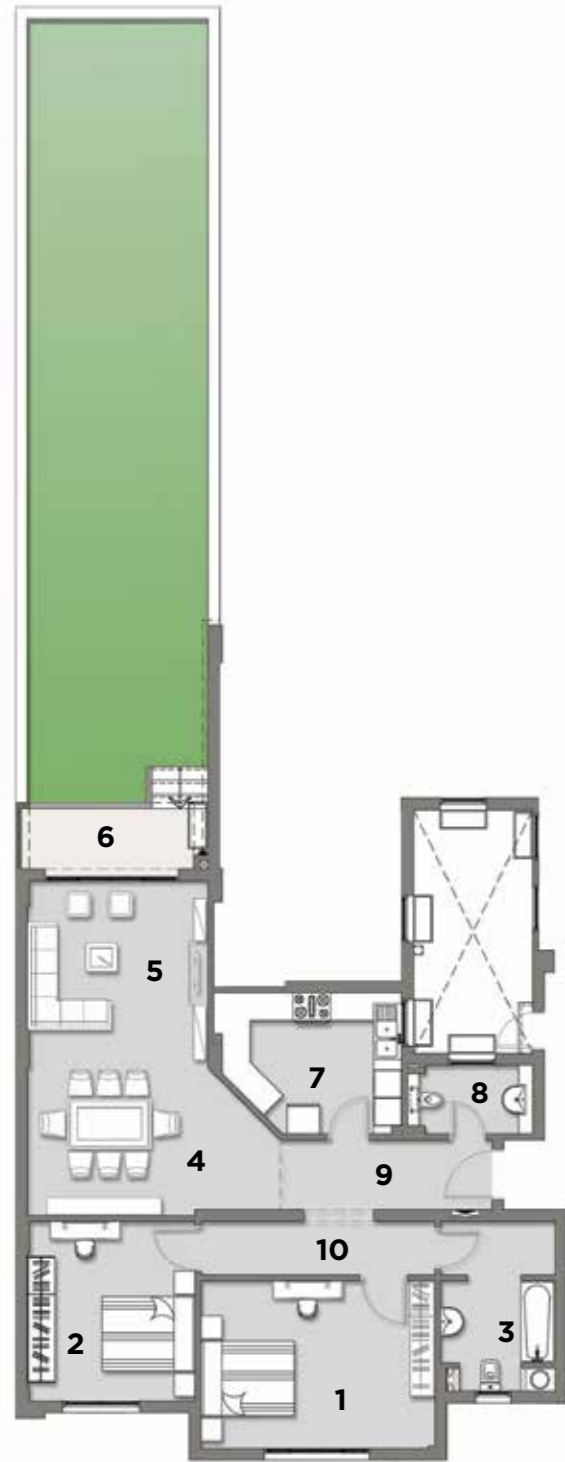
1. DINING ROOM	4.00 x 4.90 m
2. RECEPTION	4.00 x 4.25 m
3. TERRACE 1	3.85 x 1.70 m
4. BEDROOM 1	3.80 x 3.90 m
5. BEDROOM 2	3.60 x 4.50 m
6. TERRACE 2	1.55 x 1.40 m
7. MASTER BEDROOM	5.00 x 3.90 m
8. DRESSING ROOM	2.40 x 1.55 m
9. MASTER BATHROOM	2.30 x 2.35 m
10. BATHROOM	2.70 x 2.20 m
11. KITCHEN	3.45 x 3.85 m
12. TOILET	1.70 x 1.95 m
13. CORRIDOR	1.15 x 2.75 m
14. CORRIDOR	1.15 x 3.40 m
15. ENTRANCE	4.90 x 1.40 m
16. LOBBY	1.20 x 2.00 m

KEY PLAN



Disclaimer: 1. All rooms dimensions are measured to structural elements and exclude wall finished and constructions tolerances. 2. All dimensions have been provided by our consultant architects. 3. All materials, dimensions and drawings are approximate and information is subject to change without notice. 4. Actual area may vary from the stated area. 5. Drawing areas not to scale. 6. The developer reserves the right to make revisions. 7. Actual unit areas, front windows, porches, terraces, loggia and exterior trim detail may vary by elevation styles. 8. The unit orientation will be shown in the parcel layout and not as show in the floor plans.

TYPE B APT.4 + GARDEN | GROUND FLOOR



BUILT UP AREA 143 m²

GARDEN AREA 65 m²

APARTMENT COMPONENTS

1. BEDROOM 1	3.60 x 5.00 m
2. BEDROOM 2	3.85 x 3.60 m
3. BATHROOM	2.45 x 3.65 m
4. DINING ROOM	3.20 x 5.40 m
5. RECEPTION	3.85 x 4.00 m
6. TERRACE	4.00 x 1.45 m
7. KITCHEN	4.00 x 3.00 m
8. TOILET	2.65 x 1.45 m
9. ENTRANCE	1.50 x 4.55 m
10. CORRIDOR	1.15 x 5.00 m

KEY PLAN



Disclaimer: 1. All rooms dimensions are measured to structural elements and exclude wall finished and constructions tolerances. 2. All dimensions have been provided by our consultant architects. 3. All materials, dimensions and drawings are approximate and information is subject to change without notice. 4. Actual area may vary from the stated area. 5. Drawing areas not to scale. 6. The developer reserves the right to make revisions. 7. Actual unit areas, front windows, porches, terraces, loggia and exterior trim detail may vary by elevation styles. 8. The unit orientation will be shown in the parcel layout and not as show in the floor plans.

TYPE B APT.4 - TYPICAL FLOORS | 1st, 2nd, 3rd & 4th FLOOR



BUILT UP AREA 148 m²

APARTMENT COMPONENTS

1. BEDROOM 1	3.60 x 5.00 m
2. TERRACE 1	1.35 x 2.35 m
3. BATHROOM	2.25 x 3.65 m
4. BEDROOM 2	3.85 x 3.60 m
5. DINING ROOM	4.00 x 5.45 m
6. RECEPTION	3.20 x 3.90 m
7. TERRACE 2	3.60 x 1.40 m
8. KITCHEN	4.00 x 3.00 m
9. TOILET	2.70 x 1.50 m
10. ENTRANCE	1.50 x 4.55m
11. CORRIDOR	1.15 x 5.00 m

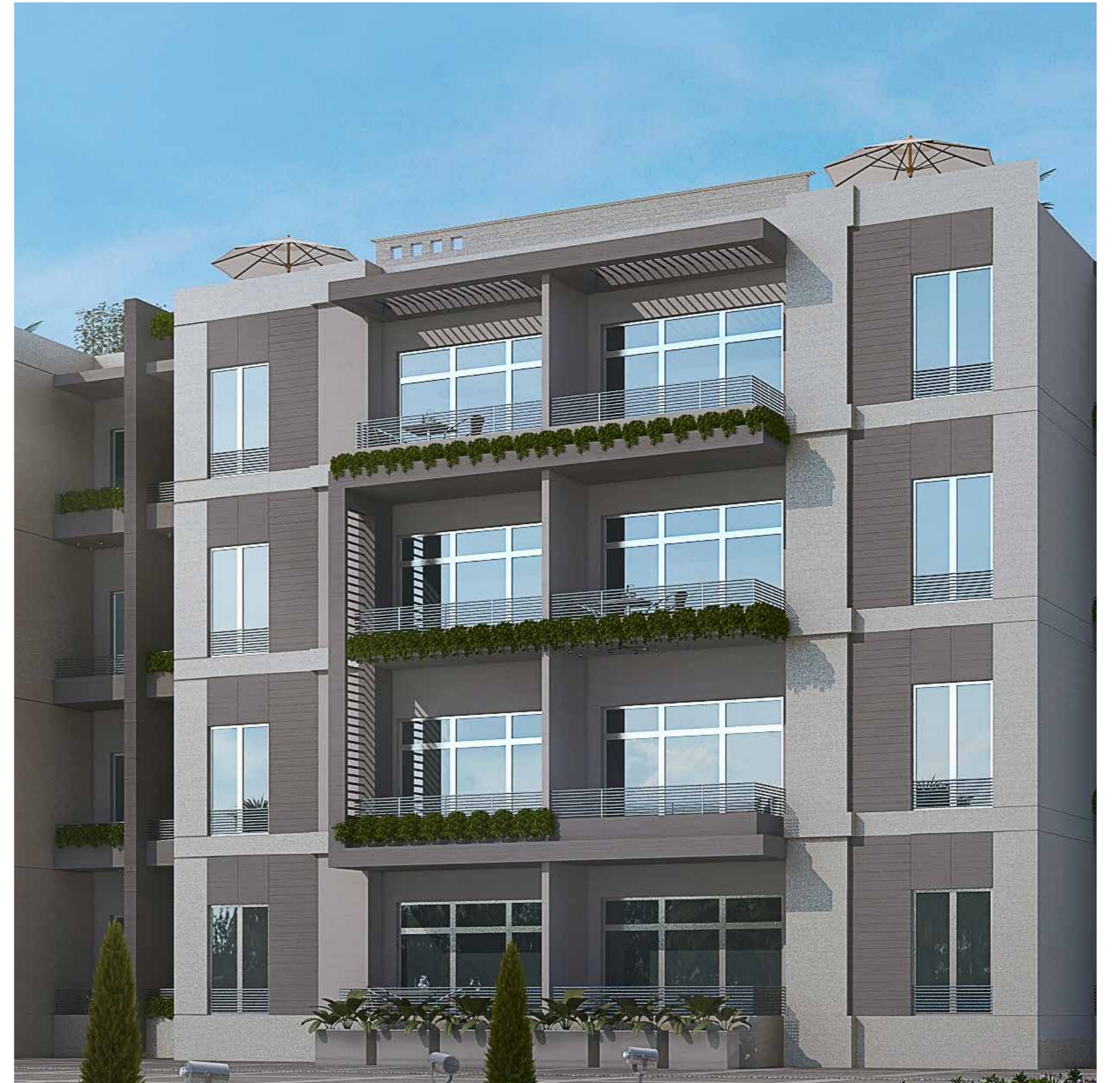
KEY PLAN

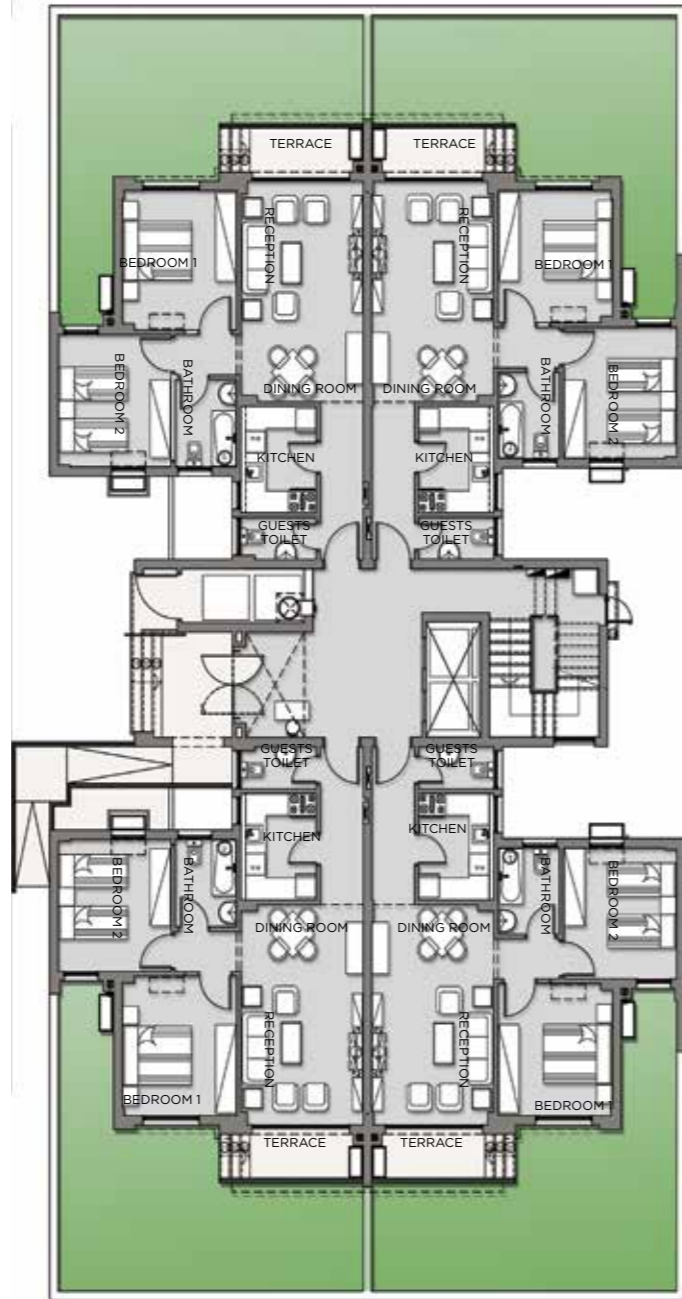


Disclaimer: 1. All rooms dimensions are measured to structural elements and exclude wall finished and constructions tolerances. 2. All dimensions have been provided by our consultant architects. 3. All materials, dimensions and drawings are approximate and information is subject to change without notice. 4. Actual area may vary from the stated area. 5. Drawing areas not to scale. 6. The developer reserves the right to make revisions. 7. Actual unit areas, front windows, porches, terraces, loggia and exterior trim detail may vary by elevation styles. 8. The unit orientation will be shown in the parcel layout and not as show in the floor plans.

TYPE C

Disclaimer: 1. All rooms dimensions are measured to structural elements and exclude wall finished and constructions tolerances. 2. All dimensions have been provided by our consultant architects. 3. All materials, dimensions and drawings are approximate and information is subject to change without notice. 4. Actual area may vary from the stated area. 5. Drawing areas not to scale. 6. The developer reserves the right to make revisions. 7. Actual unit areas, front windows, porches, terraces, loggia and exterior trim detail may vary by elevation styles. 8. The unit orientation will be shown in the parcel layout and not as show in the floor plans.

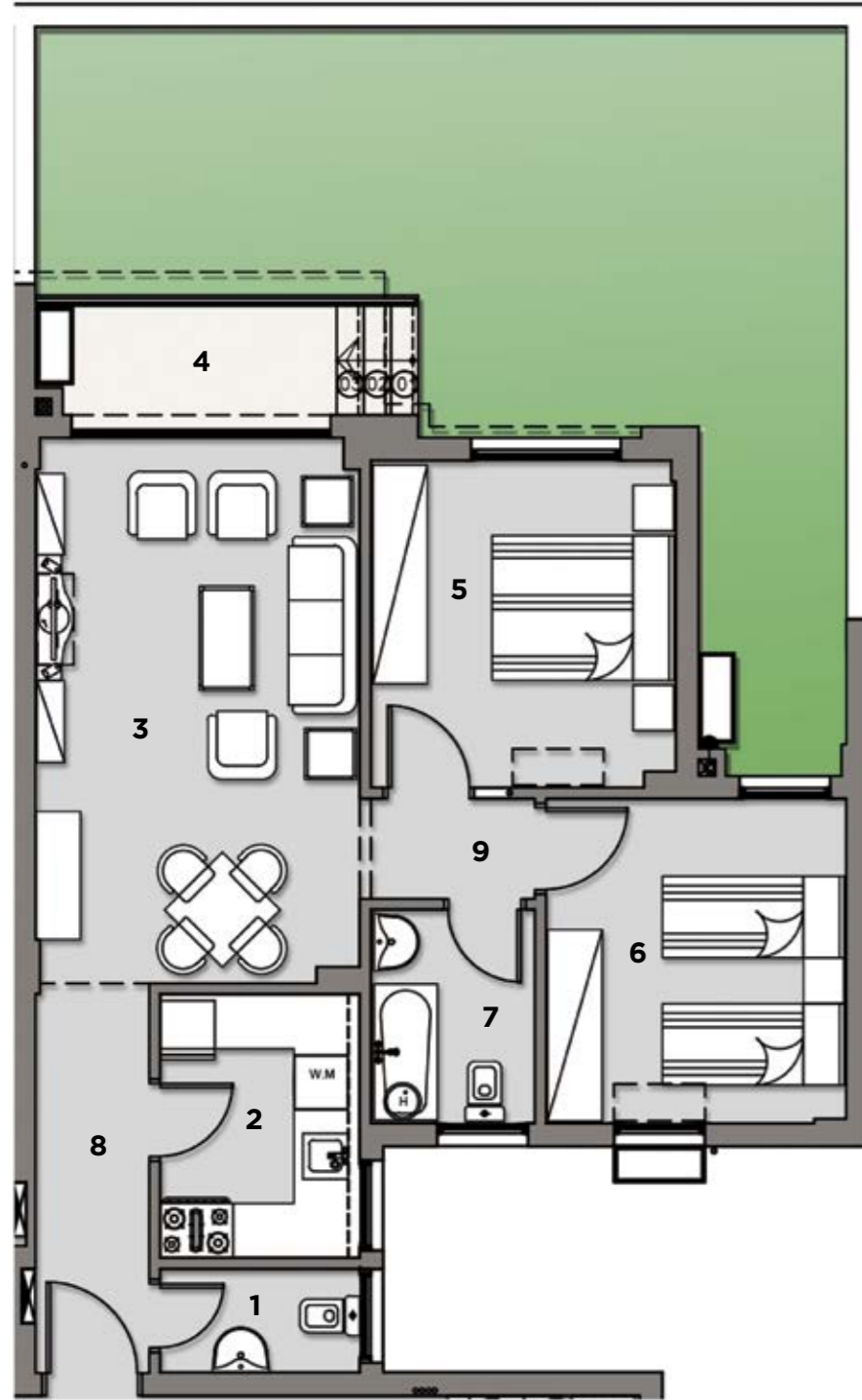




TYPE C

KEY PLAN

TYPE C APT.1 + GARDEN | GROUND FLOOR



BUILT UP AREA 96 m²

GARDEN AREA 40 m²

APARTMENT COMPONENTS

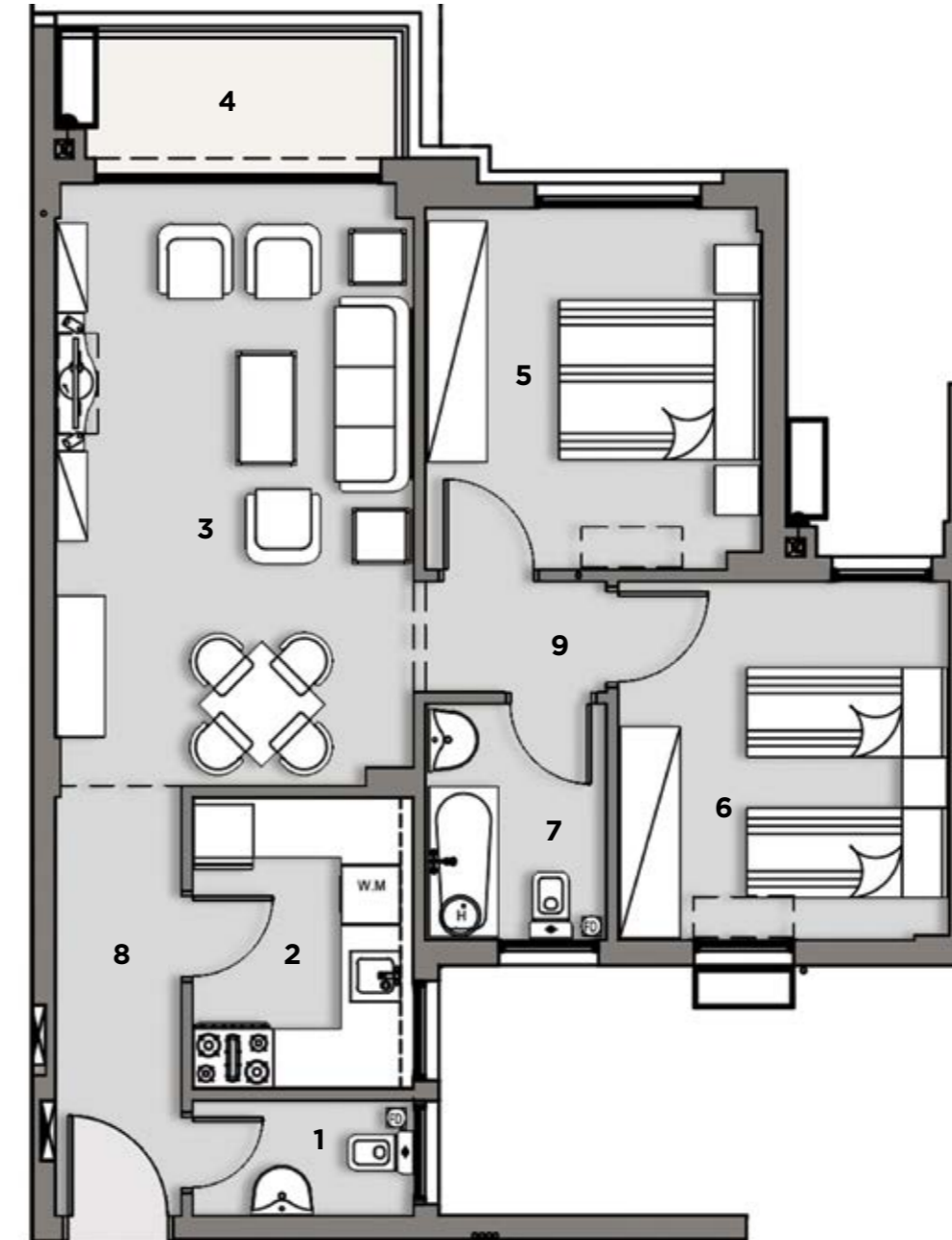
1. TOILET	1.15 x 2.20 m
2. KITCHEN	2.90 x 2.20 m
3. RECEPTION & DINING	6.20 x 3.50 m
4. TERRACE	3.40 x 1.30 m
5. BEDROOM 1	4.00 x 3.35 m
6. BEDROOM 2	3.60 x 3.30 m
7. BATHROOM	1.80 x 2.40 m
8. ENTRANCE	1.25 x 4.30 m
9. CORRIDOR	1.10 x 1.90 m

KEY PLAN



Disclaimer: 1. All rooms dimensions are measured to structural elements and exclude wall finished and constructions tolerances. 2. All dimensions have been provided by our consultant architects. 3. All materials, dimensions and drawings are approximate and information is subject to change without notice. 4. Actual area may vary from the stated area. 5. Drawing areas not to scale. 6. The developer reserves the right to make revisions. 7. Actual unit areas, front windows, porches, terraces, loggia and exterior trim detail may vary by elevation styles. 8. The unit orientation will be shown in the parcel layout and not as show in the floor plans.

TYPE C APT.1 - TYPICAL FLOORS | 1st, 2nd, 3rd & 4th FLOOR



BUILT UP AREA 96 m²

APARTMENT COMPONENTS

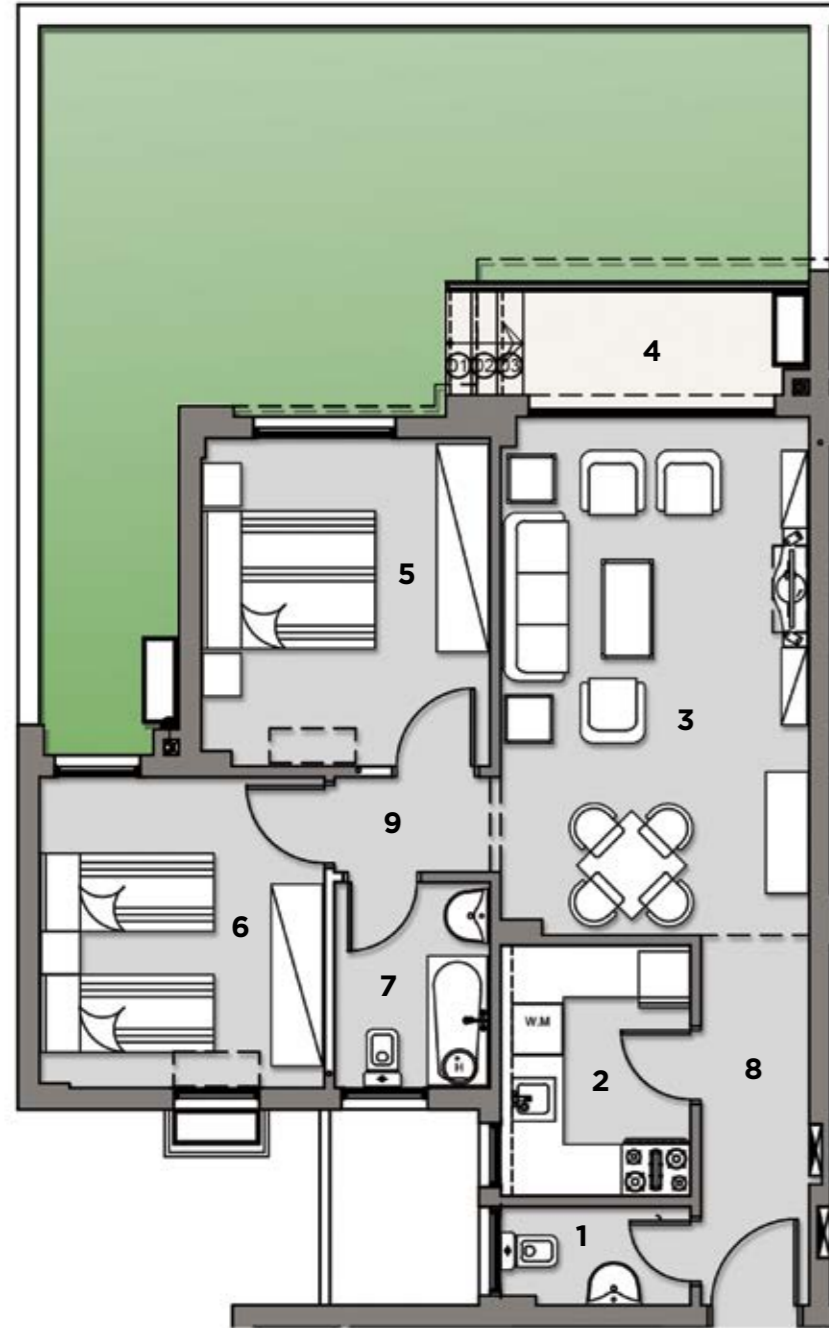
1. TOILET	1.15 x 2.20 m
2. KITCHEN	2.90 x 2.20 m
3. RECEPTION & DINING	6.20 x 3.50 m
4. TERRACE	3.40 x 1.30 m
5. BEDROOM 1	4.00 x 3.35 m
6. BEDROOM 2	3.60 x 3.30 m
7. BATHROOM	1.80 x 2.40 m
8. ENTRANCE	1.25 x 4.50 m
9. CORRIDOR	1.10 x 1.90 m

KEY PLAN



Disclaimer: 1. All rooms dimensions are measured to structural elements and exclude wall finished and constructions tolerances. 2. All dimensions have been provided by our consultant architects. 3. All materials, dimensions and drawings are approximate and information is subject to change without notice. 4. Actual area may vary from the stated area. 5. Drawing areas not to scale. 6. The developer reserves the right to make revisions. 7. Actual unit areas, front windows, porches, terraces, loggia and exterior trim detail may vary by elevation styles. 8. The unit orientation will be shown in the parcel layout and not as show in the floor plans.

TYPE C APT.2 + GARDEN | GROUND FLOOR



BUILT UP AREA 96 m²

GARDEN AREA 40 m²

APARTMENT COMPONENTS

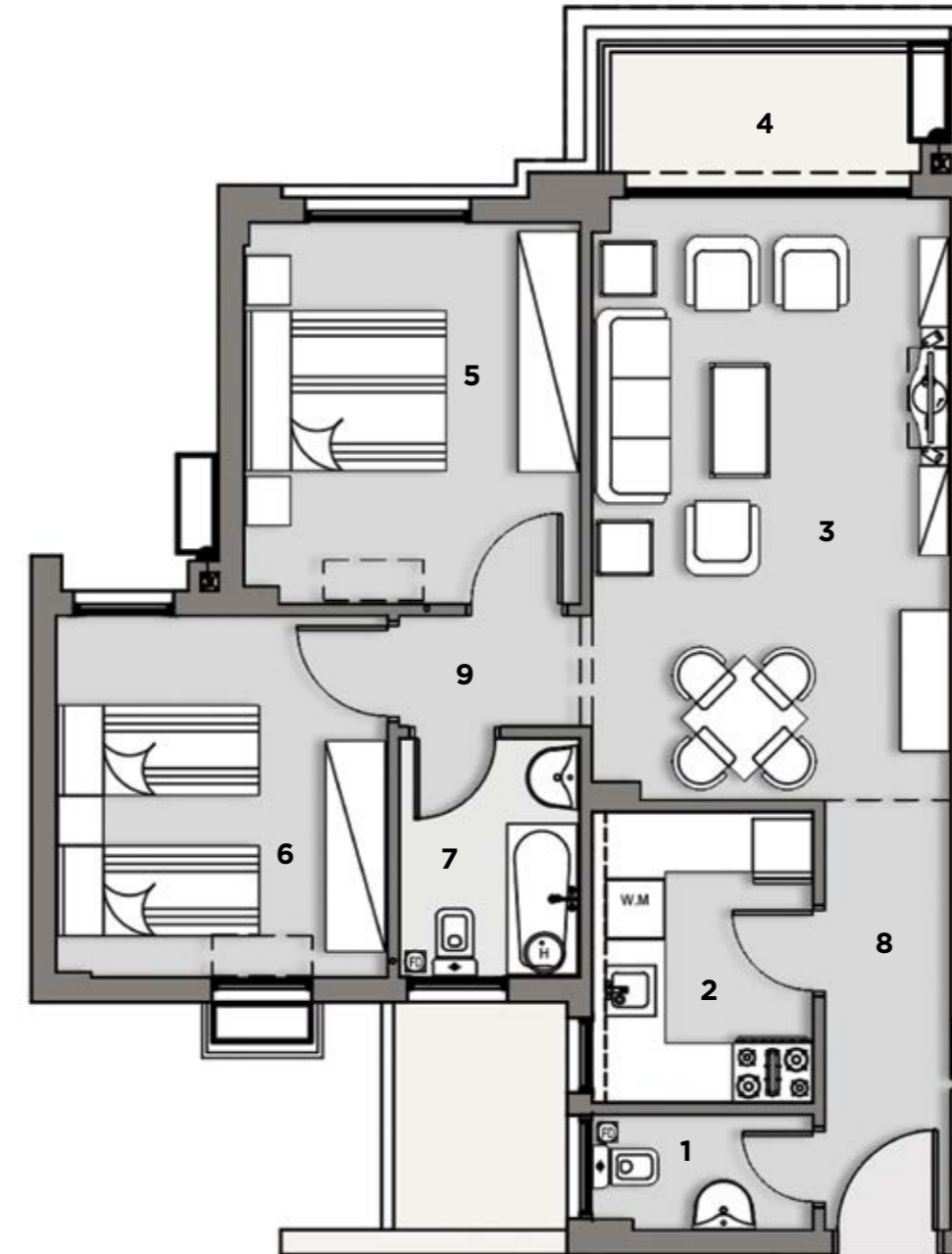
1. TOILET	1.15 x 2.20 m
2. KITCHEN	2.90 x 2.20 m
3. RECEPTION & DINING	6.20 x 3.50 m
4. TERRACE	3.40 x 1.30 m
5. BEDROOM 1	4.00 x 3.35 m
6. BEDROOM 2	3.60 x 3.30 m
7. BATHROOM	1.80 x 2.40 m
8. ENTRANCE	1.25 x 4.30 m
9. CORRIDOR	1.10 x 1.90 m

KEY PLAN



Disclaimer: 1. All rooms dimensions are measured to structural elements and exclude wall finished and constructions tolerances. 2. All dimensions have been provided by our consultant architects. 3. All materials, dimensions and drawings are approximate and information is subject to change without notice. 4. Actual area may vary from the stated area. 5. Drawing areas not to scale. 6. The developer reserves the right to make revisions. 7. Actual unit areas, front windows, porches, terraces, loggia and exterior trim detail may vary by elevation styles. 8. The unit orientation will be shown in the parcel layout and not as show in the floor plans.

TYPE C APT.2 - TYPICAL FLOORS | 1st, 2nd, 3rd & 4th FLOOR



BUILT UP AREA 96 m²

APARTMENT COMPONENTS

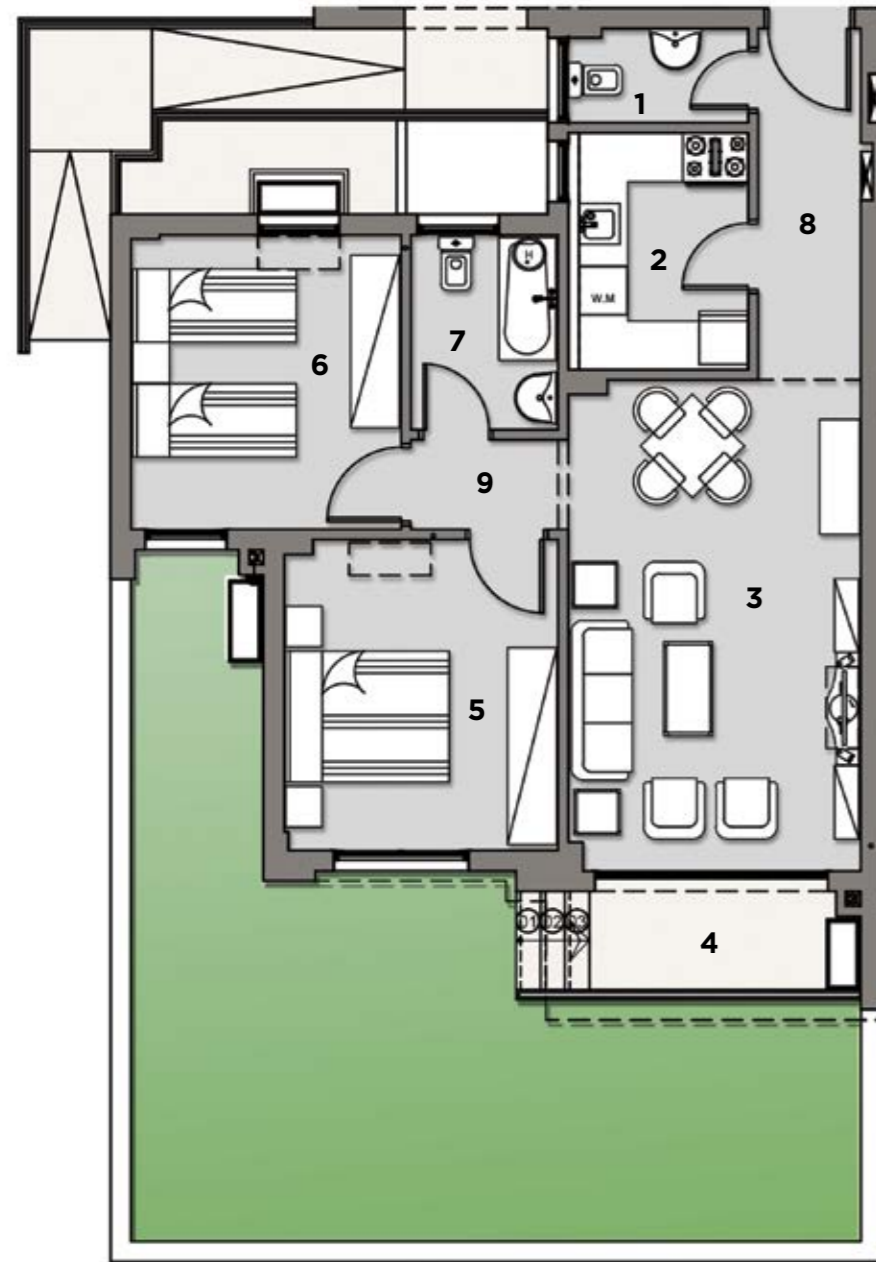
1. TOILET	1.15 x 2.20 m
2. KITCHEN	2.90 x 2.20 m
3. RECEPTION & DINING	6.20 x 3.50 m
4. TERRACE	3.40 x 1.30 m
5. BEDROOM 1	4.00 x 3.35 m
6. BEDROOM 2	3.60 x 3.30 m
7. BATHROOM	1.80 x 2.40 m
8. ENTRANCE	1.25 x 4.30 m
9. CORRIDOR	1.10 x 1.90 m

KEY PLAN



Disclaimer: 1. All rooms dimensions are measured to structural elements and exclude wall finished and constructions tolerances. 2. All dimensions have been provided by our consultant architects. 3. All materials, dimensions and drawings are approximate and information is subject to change without notice. 4. Actual area may vary from the stated area. 5. Drawing areas not to scale. 6. The developer reserves the right to make revisions. 7. Actual unit areas, front windows, porches, terraces, loggia and exterior trim detail may vary by elevation styles. 8. The unit orientation will be shown in the parcel layout and not as show in the floor plans.

TYPE C APT.3 + GARDEN | GROUND FLOOR



BUILT UP AREA 96 m²

GARDEN AREA 40 m²

APARTMENT COMPONENTS

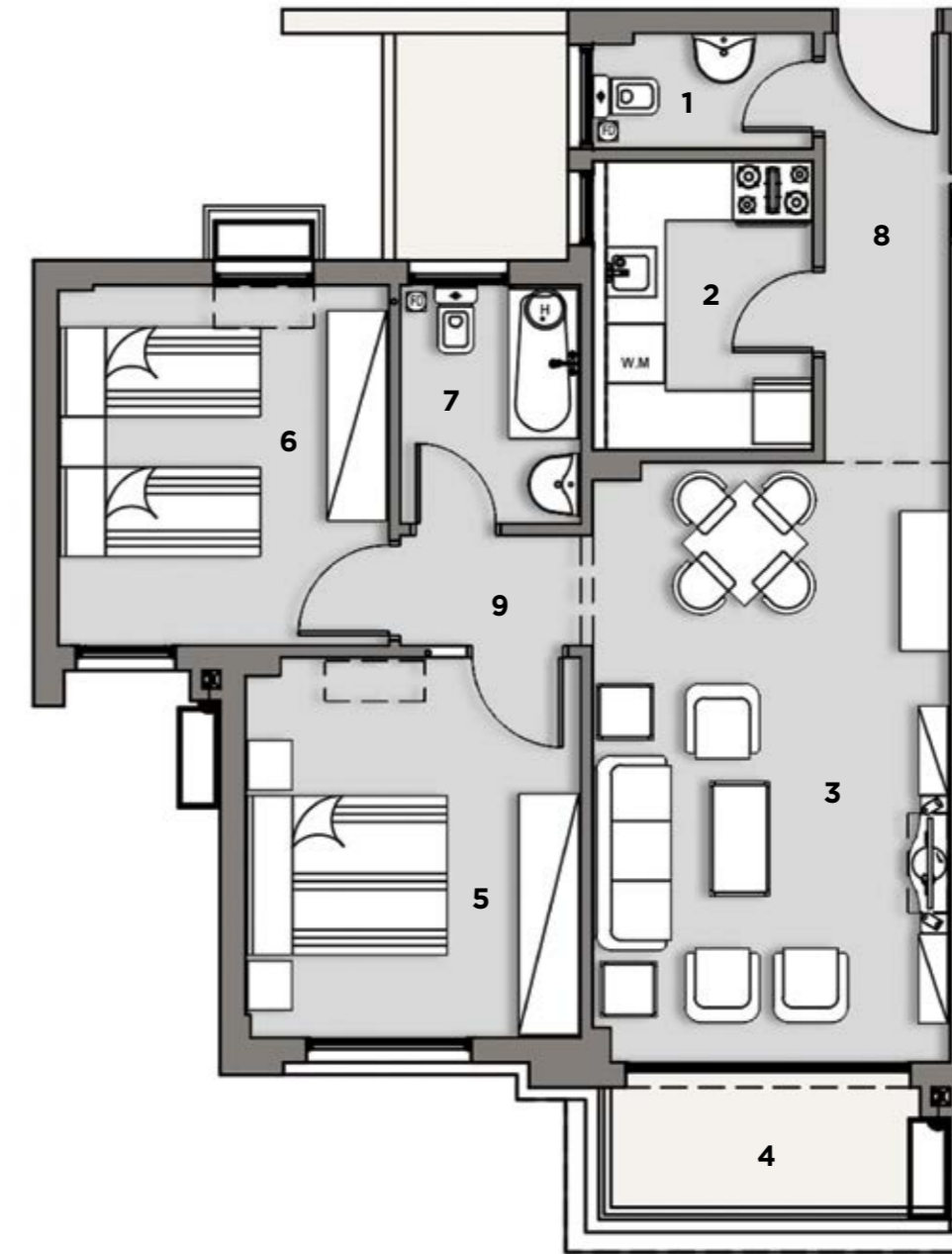
1. TOILET	1.15 x 2.20 m
2. KITCHEN	2.90 x 2.20 m
3. RECEPTION & DINING	6.20 x 3.50 m
4. TERRACE	3.40 x 1.30 m
5. BEDROOM 1	4.00 x 3.35 m
6. BEDROOM 2	3.60 x 3.30 m
7. BATHROOM	1.80 x 2.40 m
8. ENTRANCE	1.25 x 4.30 m
9. CORRIDOR	1.10 x 1.90 m

KEY PLAN



Disclaimer: 1. All rooms dimensions are measured to structural elements and exclude wall finished and constructions tolerances. 2. All dimensions have been provided by our consultant architects. 3. All materials, dimensions and drawings are approximate and information is subject to change without notice. 4. Actual area may vary from the stated area. 5. Drawing areas not to scale. 6. The developer reserves the right to make revisions. 7. Actual unit areas, front windows, porches, terraces, loggia and exterior trim detail may vary by elevation styles. 8. The unit orientation will be shown in the parcel layout and not as show in the floor plans.

TYPE C APT.3 - TYPICAL FLOORS | 1st, 2nd, 3rd & 4th FLOOR



BUILT UP AREA 96 m²

APARTMENT COMPONENTS

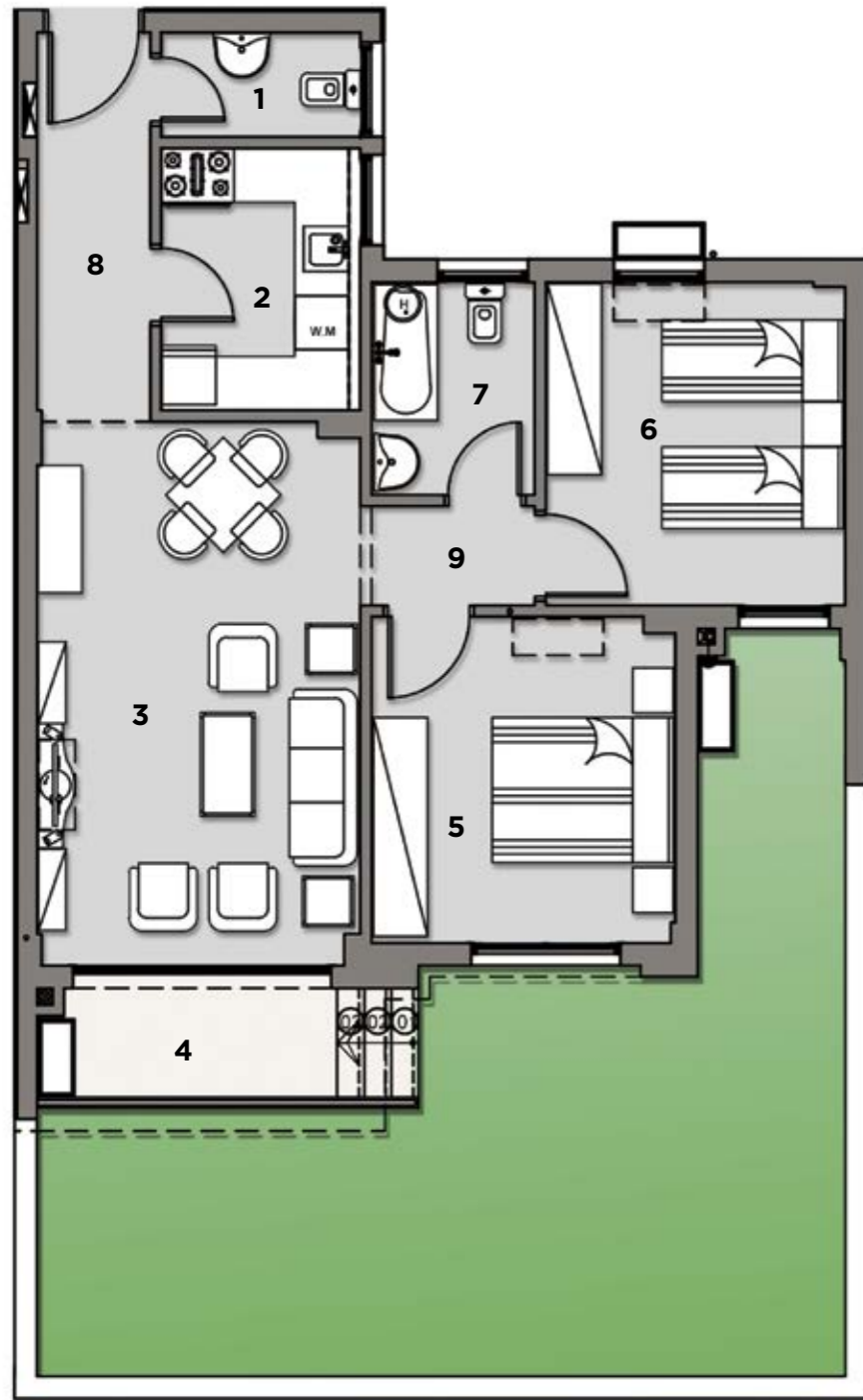
1. TOILET	1.15 x 2.20 m
2. KITCHEN	2.90 x 2.20 m
3. RECEPTION & DINING	6.20 x 3.50 m
4. TERRACE	3.40 x 1.30 m
5. BEDROOM 1	4.00 x 3.35 m
6. BEDROOM 2	3.60 x 3.30 m
7. BATHROOM	1.80 x 2.40 m
8. ENTRANCE	1.25 x 4.30 m
9. CORRIDOR	1.10 x 1.90 m

KEY PLAN



Disclaimer: 1. All rooms dimensions are measured to structural elements and exclude wall finished and constructions tolerances. 2. All dimensions have been provided by our consultant architects. 3. All materials, dimensions and drawings are approximate and information is subject to change without notice. 4. Actual area may vary from the stated area. 5. Drawing areas not to scale. 6. The developer reserves the right to make revisions. 7. Actual unit areas, front windows, porches, terraces, loggia and exterior trim detail may vary by elevation styles. 8. The unit orientation will be shown in the parcel layout and not as show in the floor plans.

TYPE C APT.4 + GARDEN | GROUND FLOOR



BUILT UP AREA 96 m²

GARDEN AREA 40 m²

APARTMENT COMPONENTS

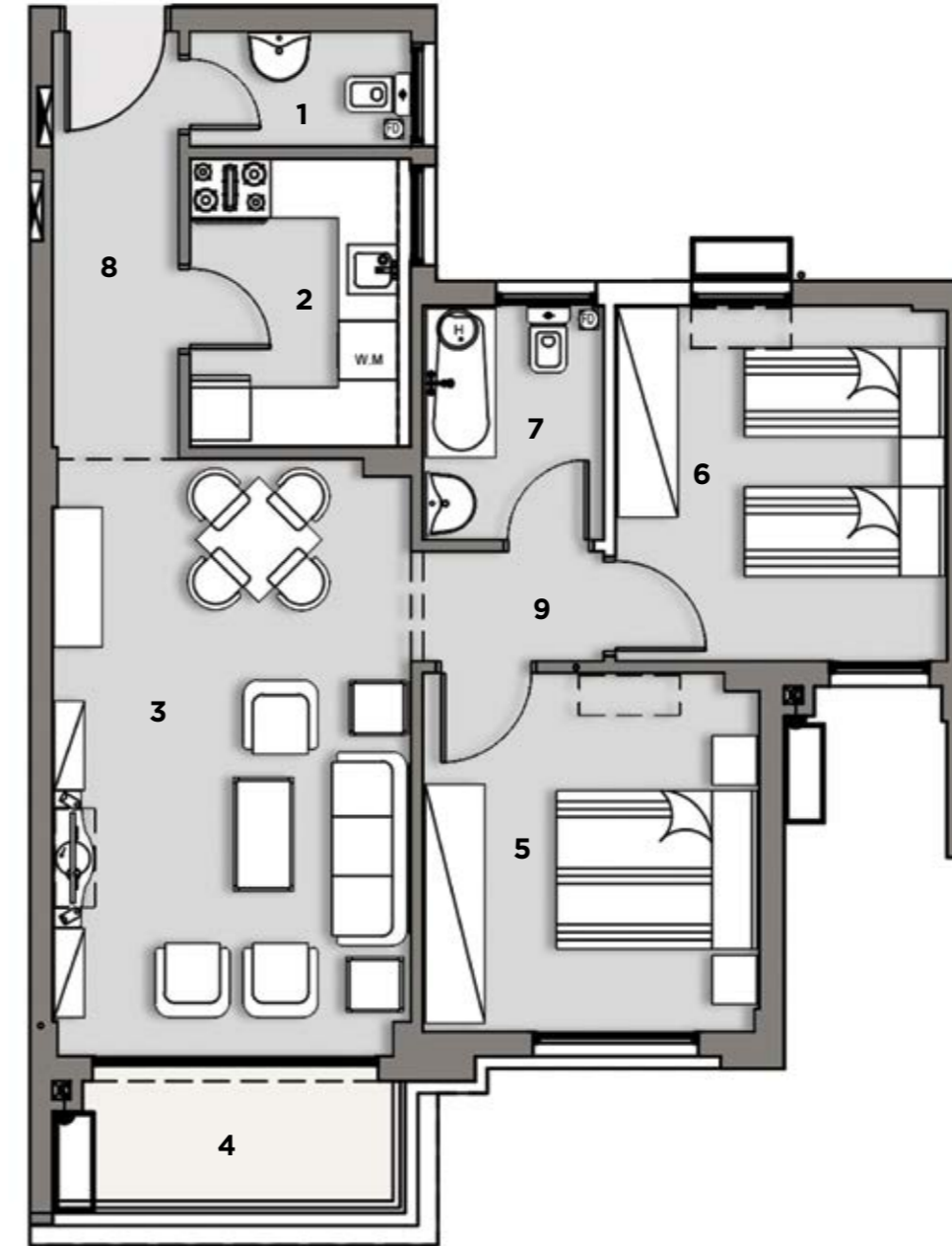
1. TOILET	1.15 x 2.20 m
2. KITCHEN	2.90 x 2.20 m
3. RECEPTION & DINING	6.20 x 3.50 m
4. TERRACE	3.40 x 1.30 m
5. BEDROOM 1	4.00 x 3.35 m
6. BEDROOM 2	3.60 x 3.30 m
7. BATHROOM	1.80 x 2.40 m
8. ENTRANCE	1.25 x 4.30 m
9. CORRIDOR	1.10 x 1.90 m

KEY PLAN



Disclaimer: 1. All rooms dimensions are measured to structural elements and exclude wall finished and constructions tolerances. 2. All dimensions have been provided by our consultant architects. 3. All materials, dimensions and drawings are approximate and information is subject to change without notice. 4. Actual area may vary from the stated area. 5. Drawing areas not to scale. 6. The developer reserves the right to make revisions. 7. Actual unit areas, front windows, porches, terraces, loggia and exterior trim detail may vary by elevation styles. 8. The unit orientation will be shown in the parcel layout and not as show in the floor plans.

TYPE C APT.4 - TYPICAL FLOORS | 1st, 2nd, 3rd & 4th FLOOR



BUILT UP AREA 96 m²

APARTMENT COMPONENTS

1. TOILET	1.15 x 2.20 m
2. KITCHEN	2.90 x 2.20 m
3. RECEPTION & DINING	6.20 x 3.50 m
4. TERRACE	3.40 x 1.30 m
5. BEDROOM 1	4.00 x 3.35 m
6. BEDROOM 2	3.60 x 3.30 m
7. BATHROOM	1.80 x 2.40 m
8. ENTRANCE	1.25 x 4.30 m
9. CORRIDOR	1.10 x 1.90 m

KEY PLAN



Disclaimer: 1. All rooms dimensions are measured to structural elements and exclude wall finished and constructions tolerances. 2. All dimensions have been provided by our consultant architects. 3. All materials, dimensions and drawings are approximate and information is subject to change without notice. 4. Actual area may vary from the stated area. 5. Drawing areas not to scale. 6. The developer reserves the right to make revisions. 7. Actual unit areas, front windows, porches, terraces, loggia and exterior trim detail may vary by elevation styles. 8. The unit orientation will be shown in the parcel layout and not as show in the floor plans.

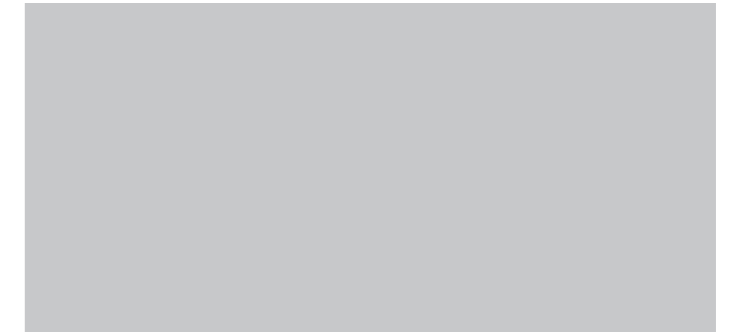
THE FINEST FINISHING

FLOORING



ITEM: HDF
AREA USED: BEDROOMS FLOORS

WALLS



ITEM: PAINT
AREA USED: ALL WALLS
*WALLS COMPLETE WITH OUTLETS SUITABLE
FOR AC INSTALLATION.



ITEM: MARBLE
AREA USED: RECEPTION AND DINNING ROOM
FLOORING

WALLS AND FLOORS



ITEM: PORCELAIN
AREA USED: BATHROOMS AND KITCHEN



PARTNERS



